

AN INITIATIVE OF

Making More From Sheep



Your Sheep Health is Your Wealth Adoption of New Approaches on Farm

Bruce Watt, Central Tablelands Local Land Services

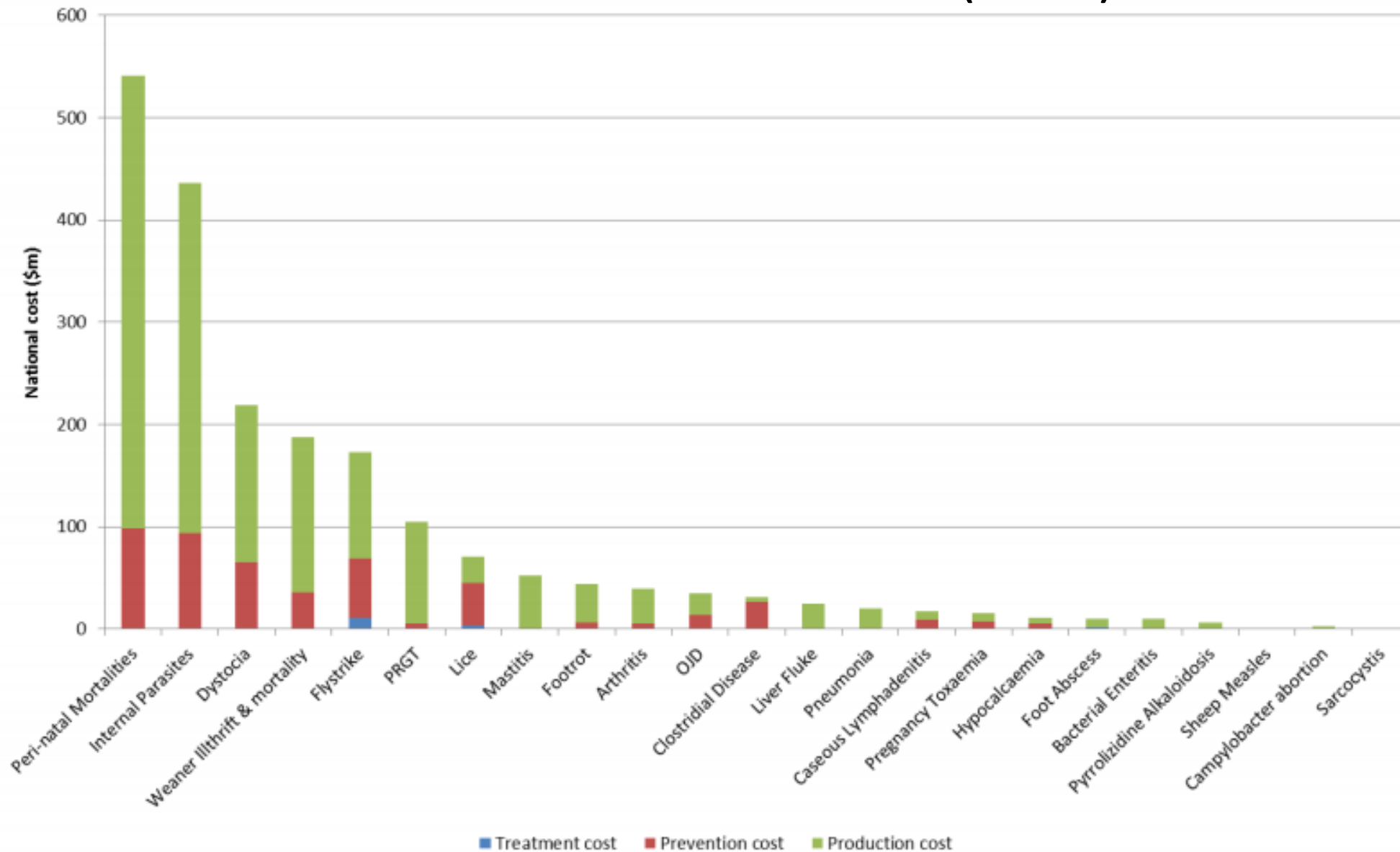


It's ewe time!



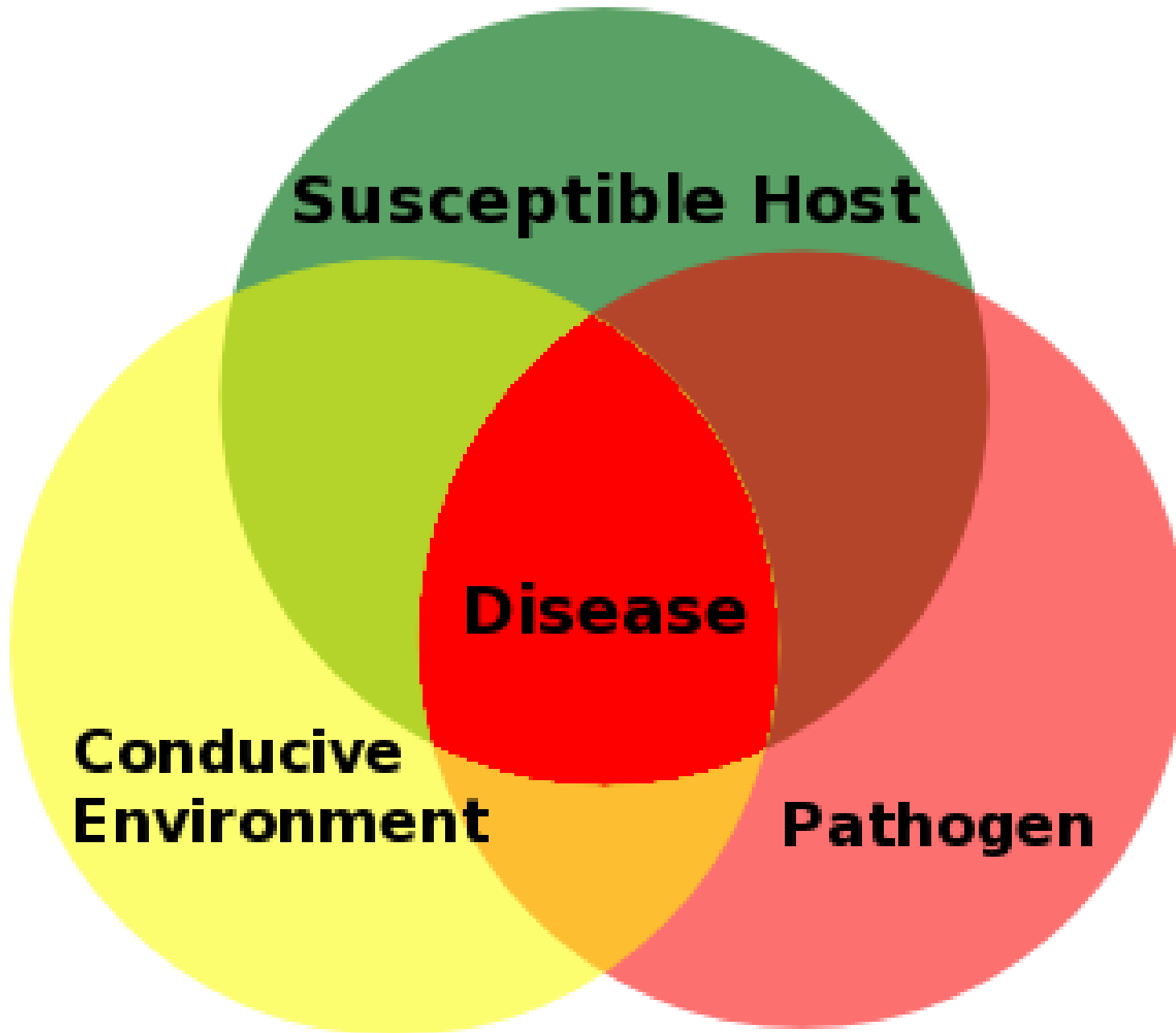


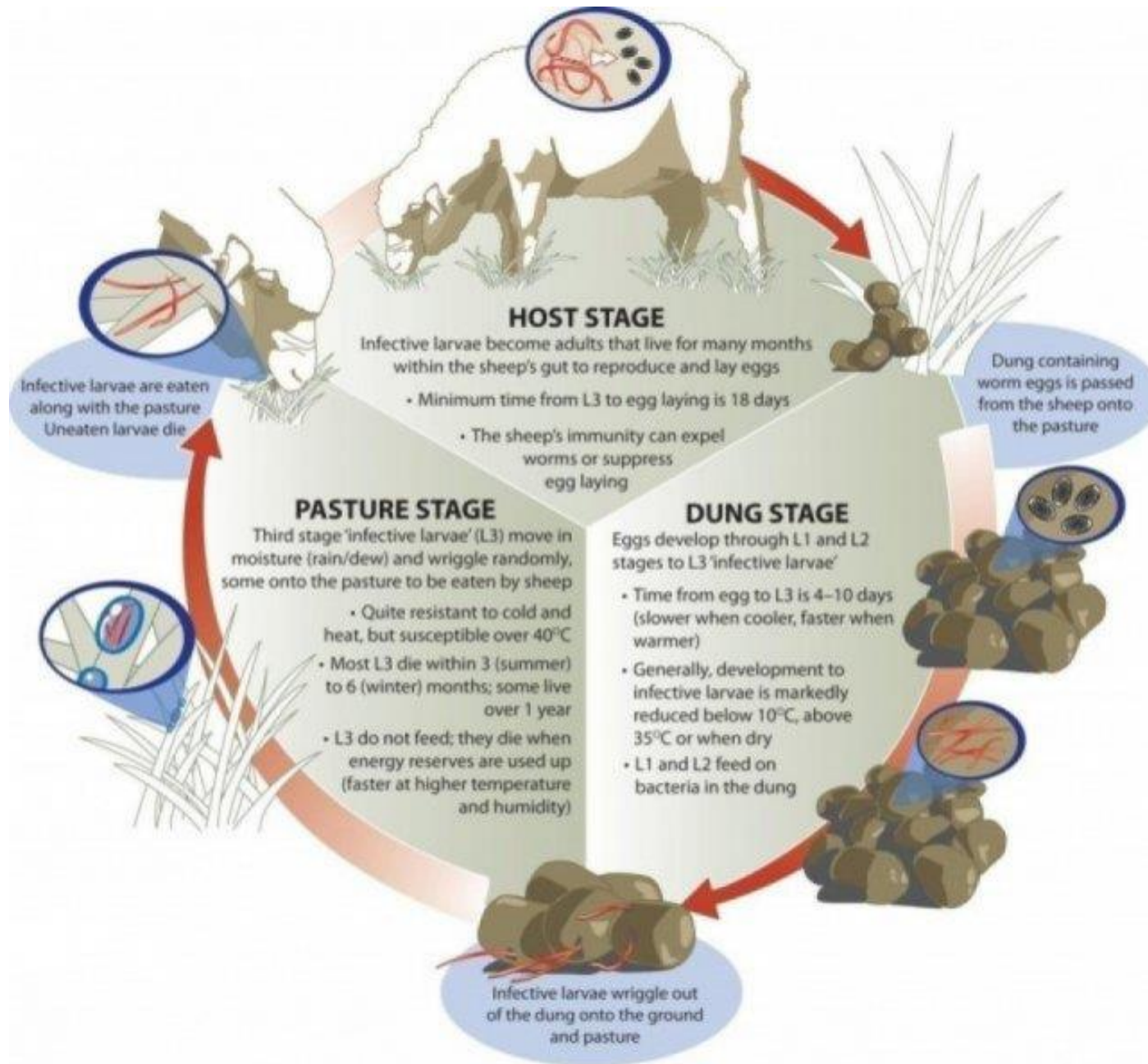
Cost of endemic diseases- Lane (2015) MLA



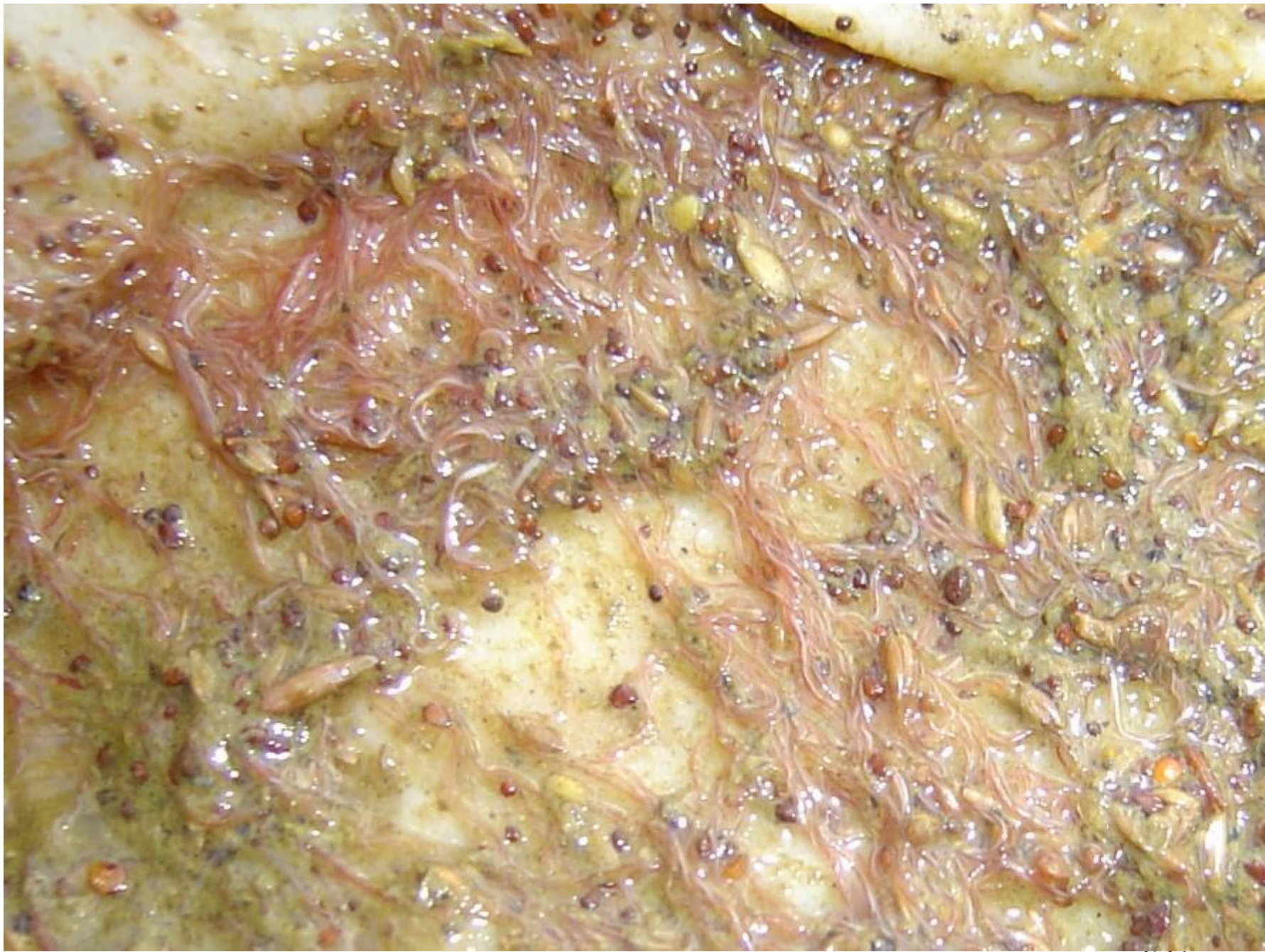
Integrated Parasite Management

- Integrated pest (or parasite or weed) management (IPM) is a method of controlling parasites in a population of animals by using a combination of chemical and non-chemical methods.





Courtesy WormBoss

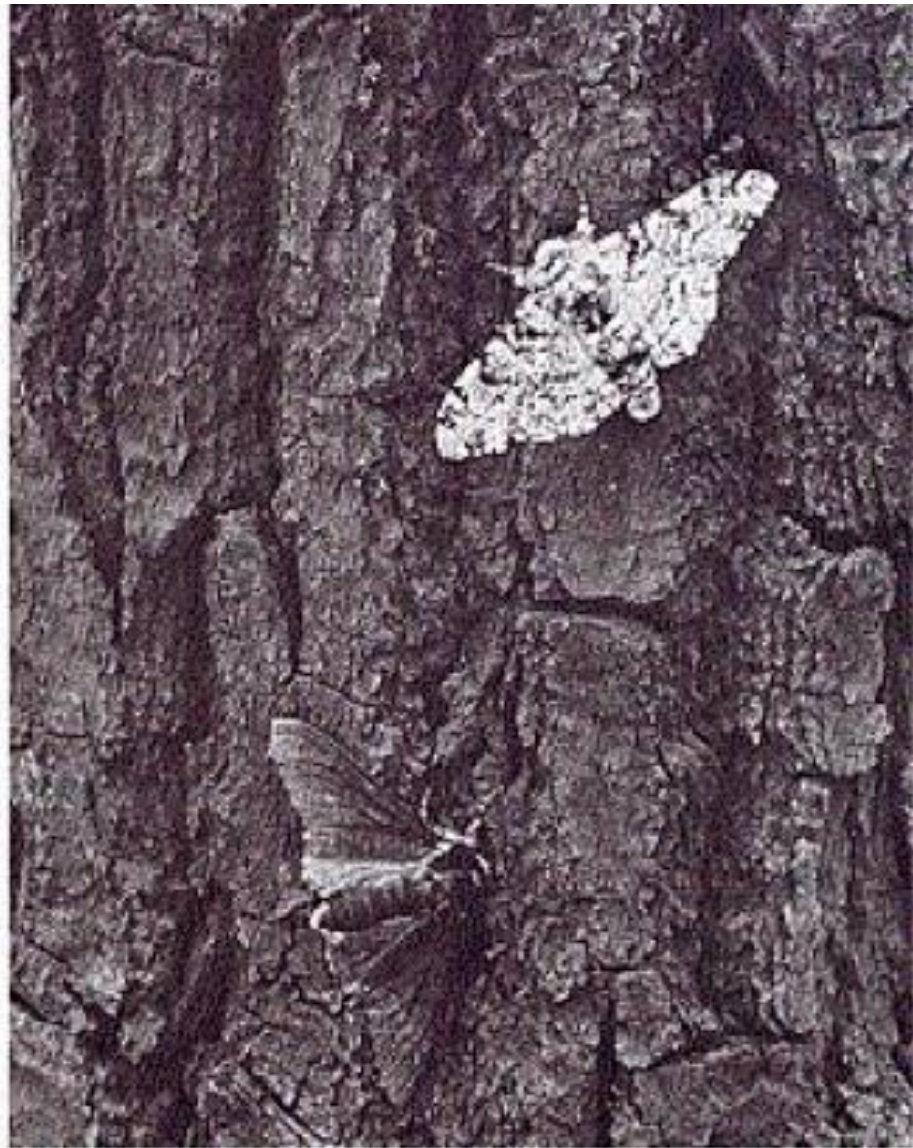
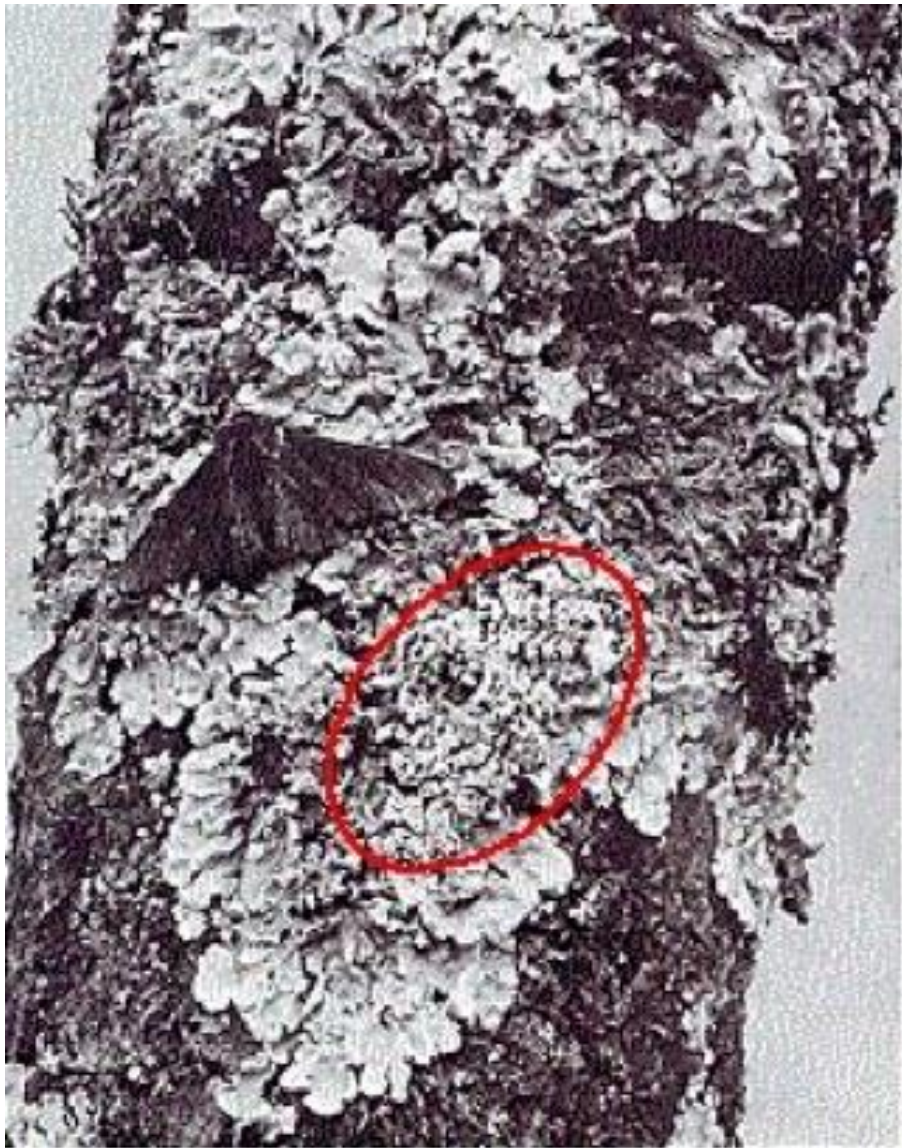




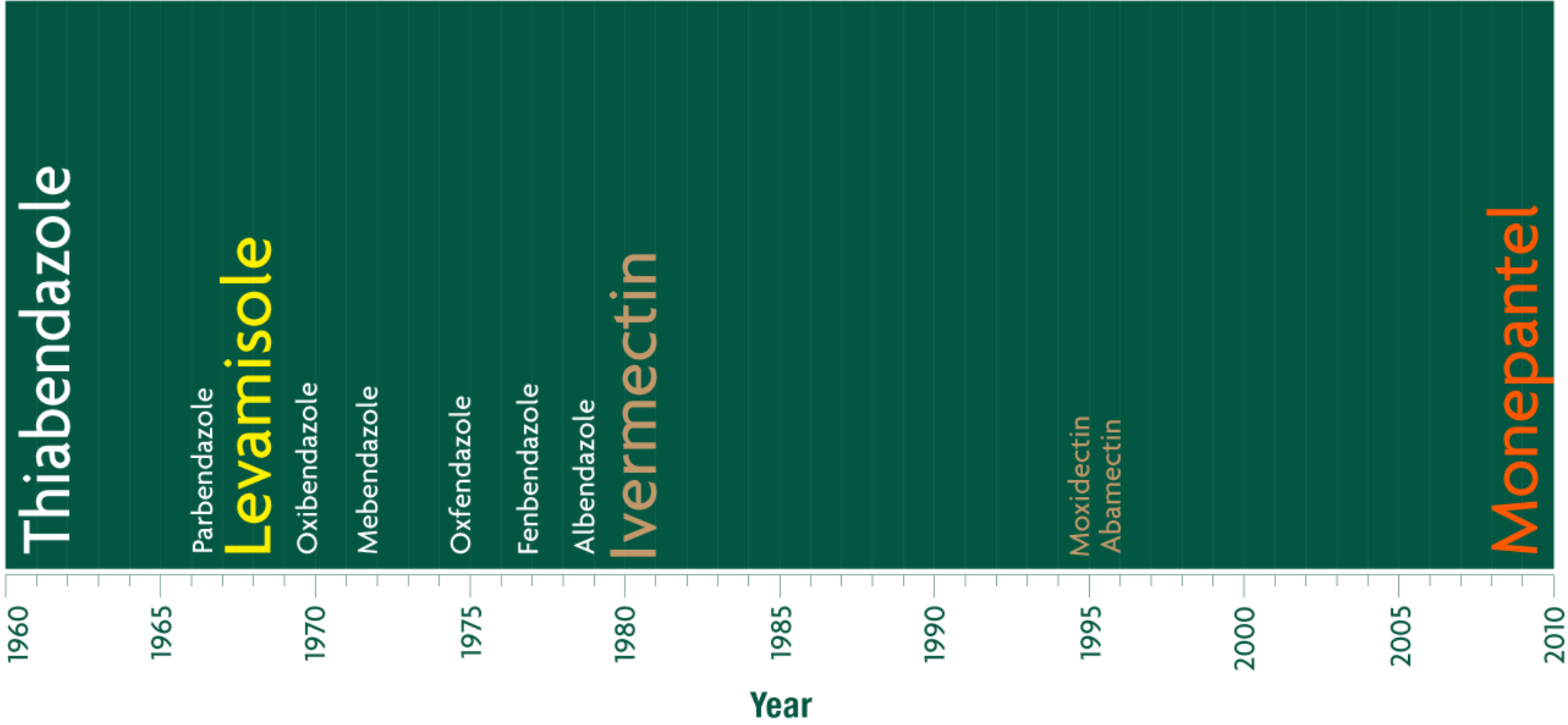




A tension exists between the aims of good control of worms and minimising further selection for anthelmintic resistance



Active



Courtesy Matt Playford, Dawbutts

Survey overview

Drench	Worm		
	Haemonchus	Ostertagia	Trichostrongylus
Closantel	9/11	1/10	0/10
Clos/BZ/Lev	1/1	1/1	0/1
Lev	6/6	2/5	1/5
BZ	1/3	0/3	0/3
Lev/BZ	1/1	0/1	1/1
IVM	0/3	1/3	1/3
Aba	2/11	7/10	8/10
Moxi	4/5	3/4	3/4
Nap	3/3	1/3	1/3
Nap/BZ/Lev	11/11	7/10	7/10

Proportion of flocks where drench was classed as effective (95% or greater reduction in WEC compared to controls)





Lot 01 110127

SIRE: 090122 x 050154
DAM: 060124 x 010339

	YFD	YCFW	YSS	YWT	YWEC
	(um)	(%)	(N/Kt)	(kg)	(%)
	-2.0	10.0	2.5	1.3	-57
Acc.	94	90	89	82	74
Avg.	-1.1	9.0	0.2	3.2	-2

Analysis Date 12/01/2015

MERINOSELECT Indexes

SHEEP GENETICS



FP+		MP+	
145		139	
64	Acc	57	
122	Avg	128	



Sheep Genetics ASBVs are calculated from raw data collected by breeders and accredited Sheep Genetics operators. Sheep Genetics (a joint program of Meat & Livestock Australia and Australian Wool Innovation Ltd) does not oversee or audit the collection of this data therefore Sheep Genetics does not accept any responsibility for the accuracy of the information document.

FP index

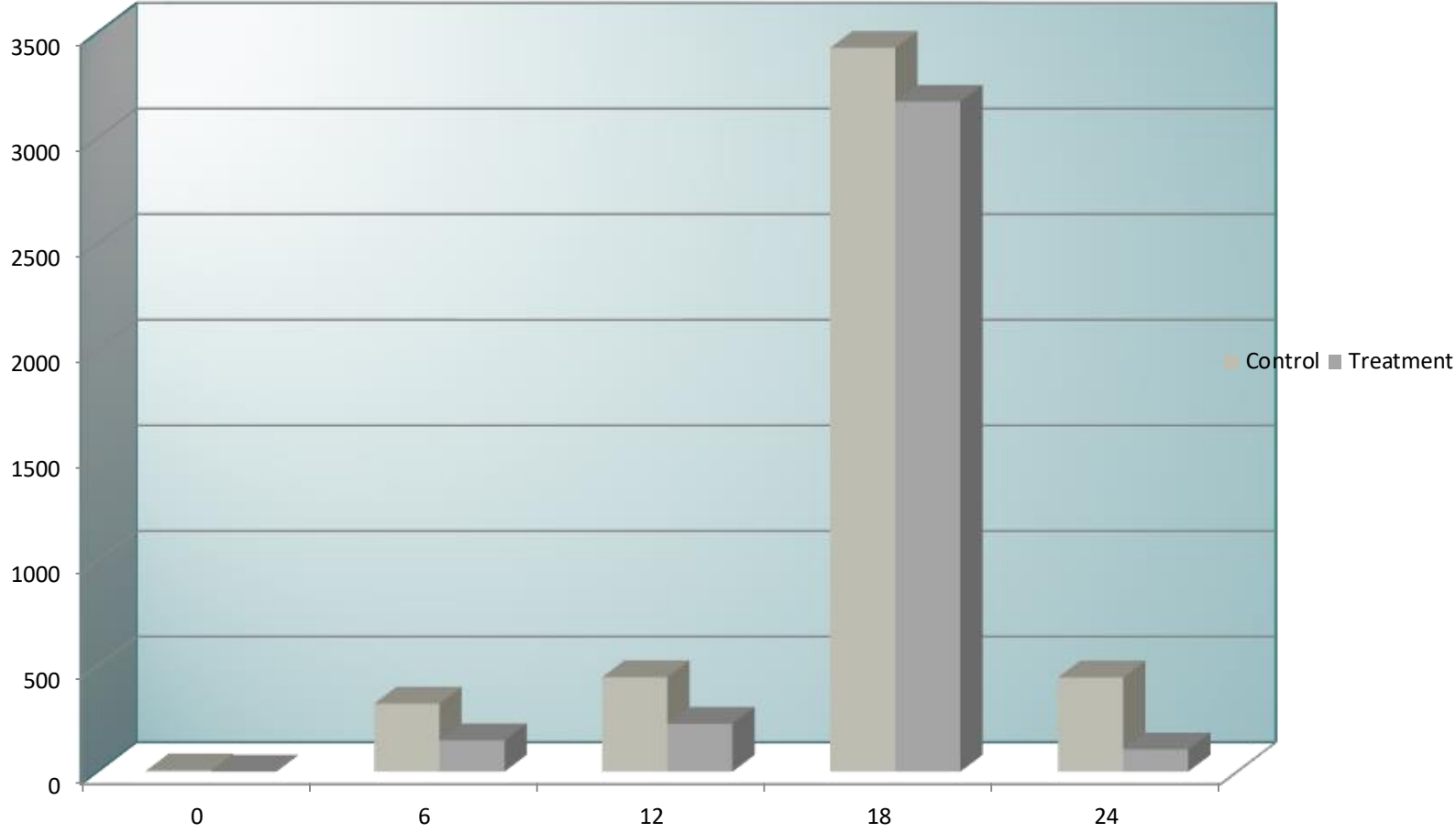
Trait	Potential Response	Contribution to economic gain (%)
Fleece Weight	+2.8%	23%
Fibre diameter	-0.8 μ m	77%
Yearling Body Weight	+0.4 kg	0%

FP+ index

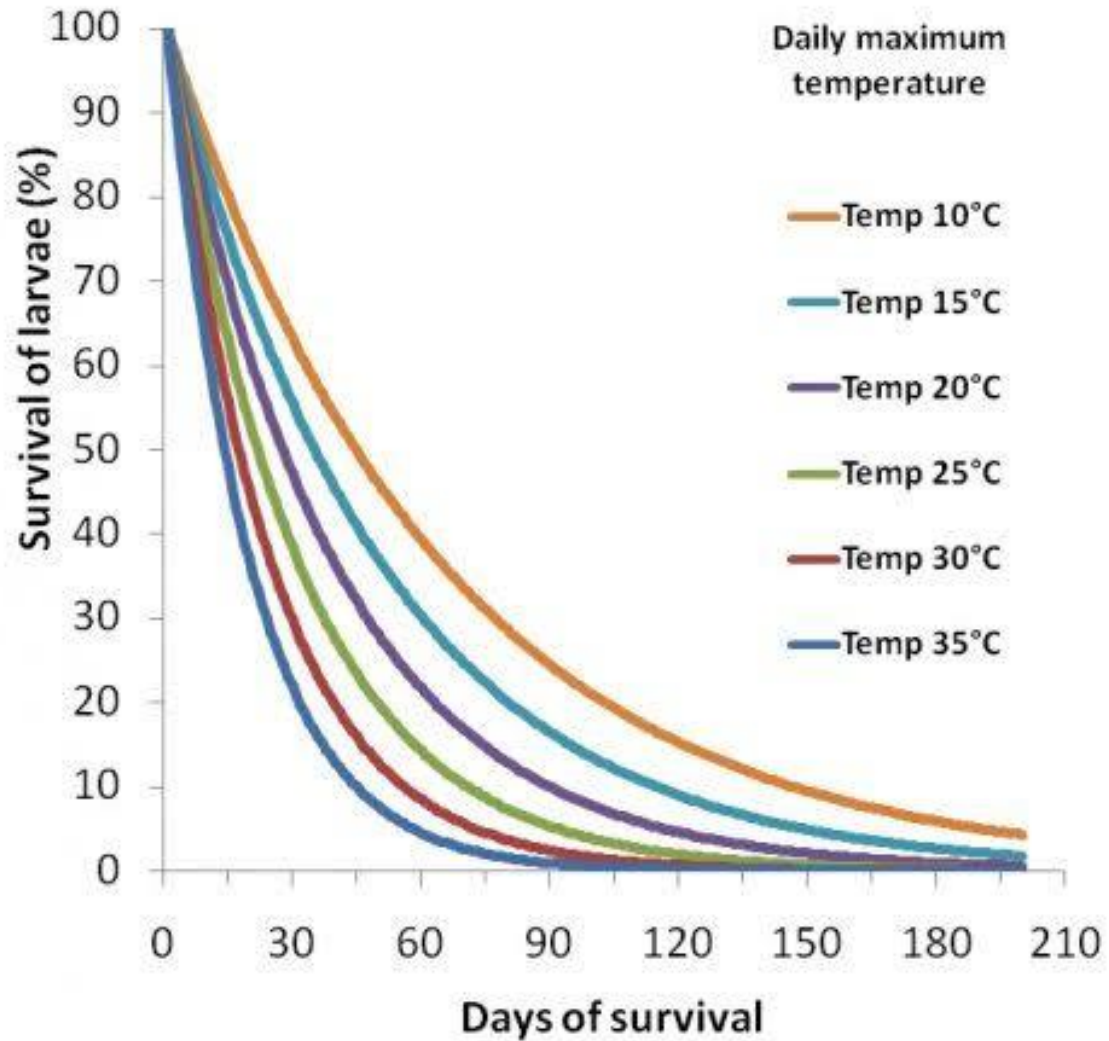
Trait	Potential Response	Contribution to economic gain (%)
Fleece Weight	+2.0%	16%
Fibre diameter	-0.7 μ m	55%
Body Weight	+0.2 kg	0%
Staple Strength	+1.2 N.ktex	15%
Worm Egg Count	-9%	6%
Number of Lambs Weaned	+1.5%	8%



WEC in Se treated and control lambs



Survival of barber's pole worm infective larvae on pasture at various daily maximum temperatures and 60% relative humidity









The departure from conventional anthelmintic approaches represents a major conceptual challenge to many livestock owners. Dr Brown Besier

paraboss

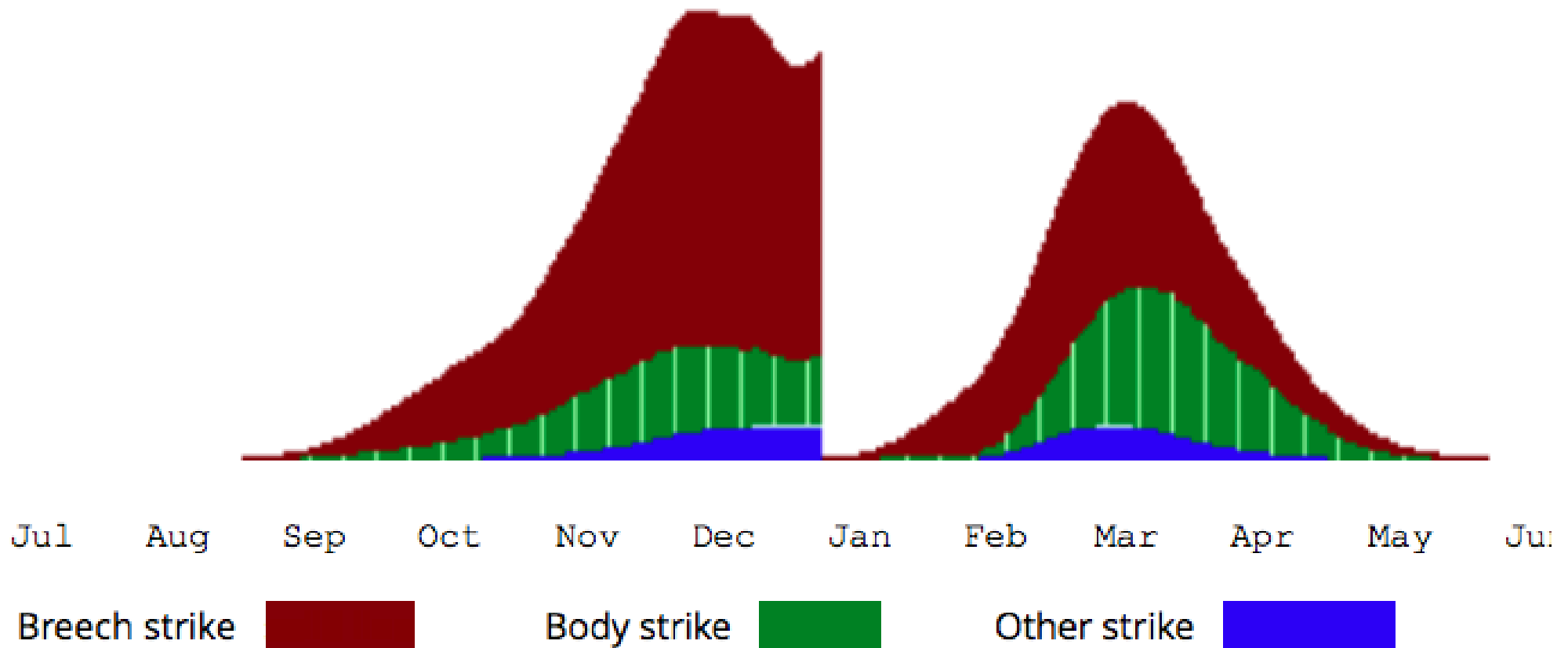
liceboss

wormboss



Flyboss tools- predict flystrike risk

Calculate



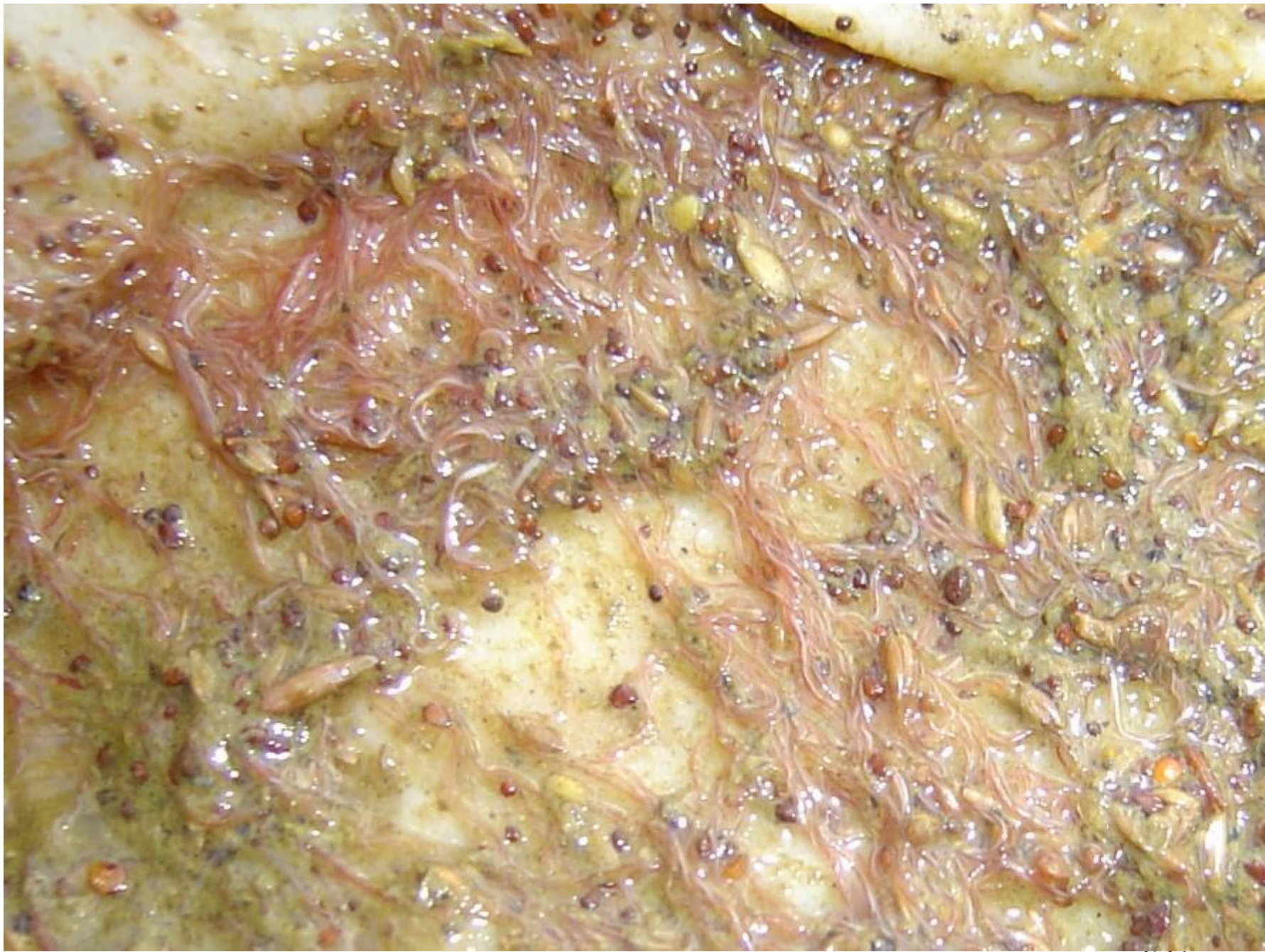
Courtesy Matt Playford and Flyboss

Biosecurity – diseases to keep off your farm









Key points, worm control

- Don't underdose
- Minimise drenching by using worm egg counts
- Drench check
- Use combinations
- Use new chemicals now rather than later
- Don't rely on long acting chemicals
- Use IPM (breeding, grazing management, nutrition)

Key points, biosecurity

- Footrot, inspect and quarantine purchased sheep
- Ovine brucellosis, have your vet check your rams
and buy from OB accredited studs
- Lice, quarantine purchased sheep
and maintain fences

Drench resistant parasites,
quarantine drench

Thank you

