



Healthy Sheep

Assoc Prof Bruce Allworth
Fred Morley Centre
CSU





Overview

- Animal health is important \$\$
- Management / season interacts with health
- Key issues:
 - worms
 - trace elements
 - biosecurity
 - bacterial enteritis
 - campylobacter
- Key points
- Signposts



What is important for healthy sheep

- Nutrition, nutrition, nutrition
- Worms, flies and lice
- Everything else!
- Interaction between health and management
 - Often need to change management OR
 - Watch when change management

1. Almost all health problems associated with management



Effect of Season

- Most diseases seasonally based
- Warm, moist conditions favour
 - Pasture growth
 - Bacterial survival
 - Worm, fly development

So if dry, nutrition is real issue (ENERGY)

2. If good season, diseases the problem!
(Farming is FUN)



2006 Review

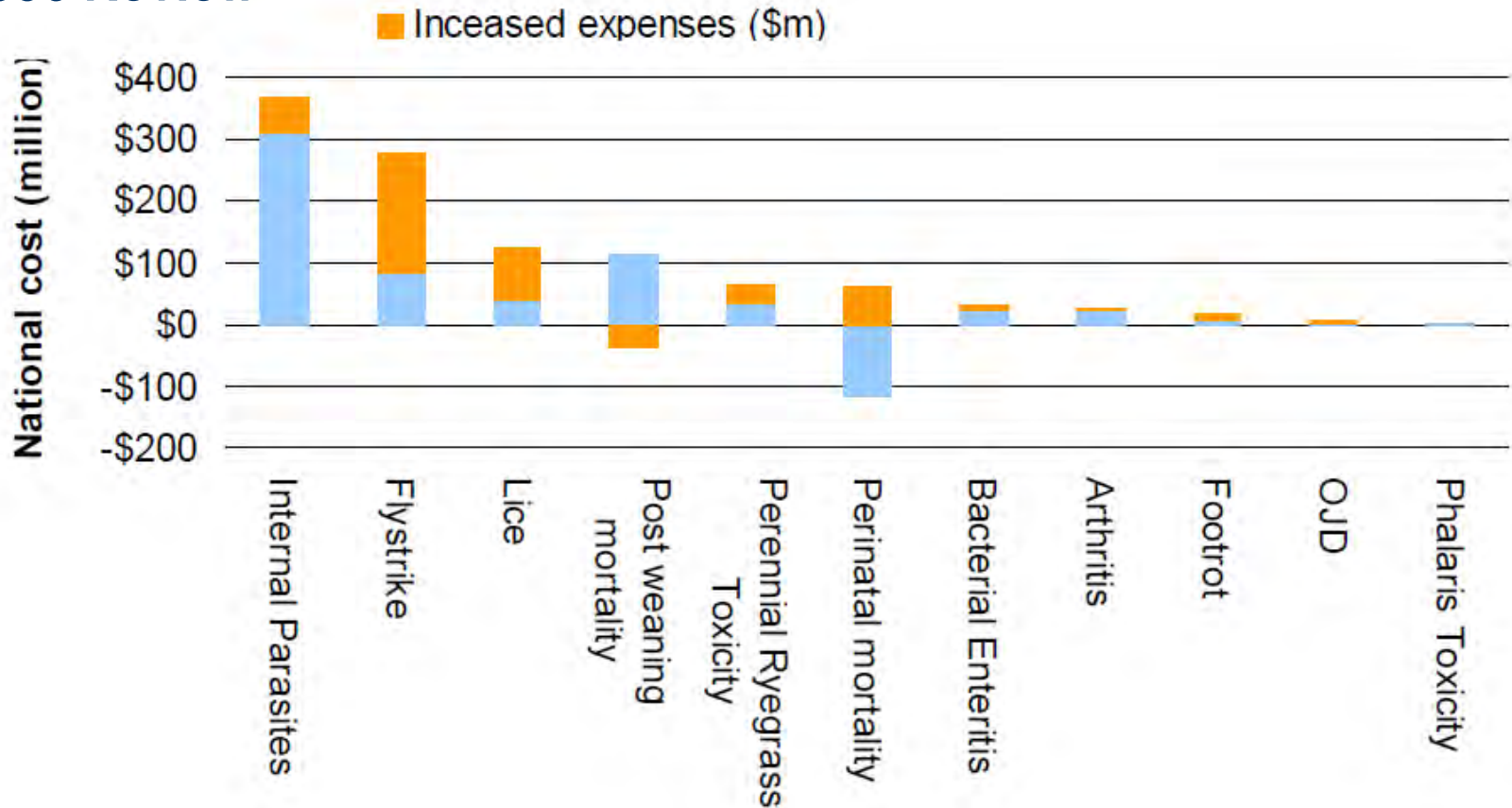
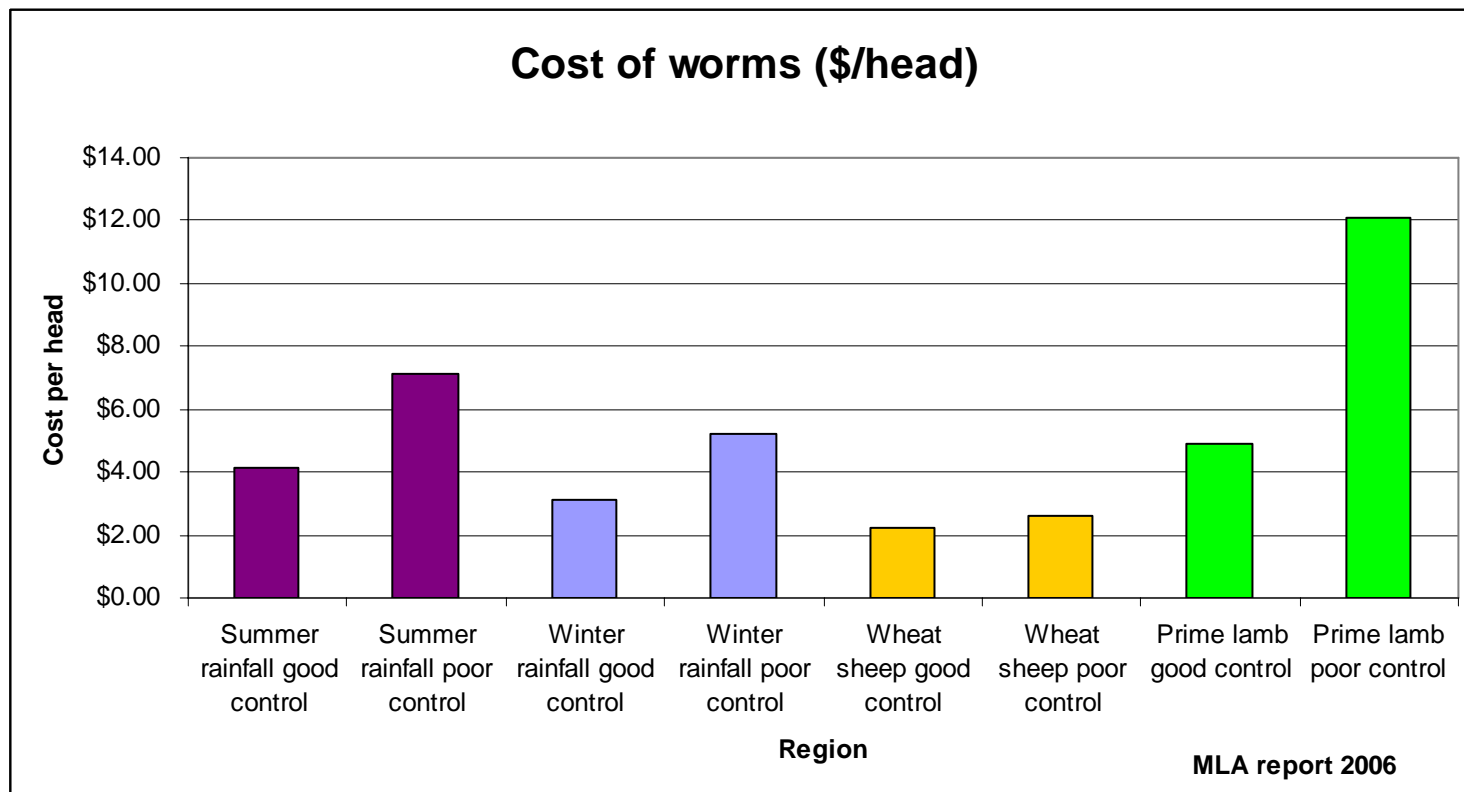


Figure 2

National cost of diseases to the sheep industry



Worms have a major financial impact



- 80-90% of loss associated with lower production
- Lower liveweight and yield ~ 2 kg carcass weight 2006 prices!
- Higher death rate and lower fertility
- Lower fleece values



Worms

- Main + major cost to sheep producers
- Pasture survival favoured if mild, cool, wet
- Balancing act- worm control + drench resistance
- Need to control worms!





Worm Control – The System

- 2 summer drenches – all ewe and lamb Merino flock
- If prime lambs, cropping, cattle, may have different needs – eg pre-lamb drench, depending on season, time of lambing
- Most lambs need a drench by 12-16 weeks
- Monitoring is best way to know

3. Monitor young sheep for worms





Monitoring (WFEC)

- Takes 17-21 days for ingested worm to lay eggs
- So WFEC tells you what was happening 3-4 weeks ago
- Best in younger sheep, or to assess contamination
- Not very useful in adult sheep (unless there is a problem with Barber's Pole (*Haemonchus*))



Drench Resistance

White (BZ):	>90%
Clear (Levamisole):	>80%+
Combinations	>60%
MLs mectins	30-80%

- Widespread, < 10% producers know status
- Individual flock test (FECRT) only way to know
- Can check 10-14 days post drenching
- Drenching when low pasture contamination is real problem
- No ideal answer (dose to correct weights, check gun etc)
 - leave some sheep undrenched
 - Leave some mobs undrenched

4. Think when drenching what the effect is!



Which drench to use?

- Effectiveness, cost, time of year
- Long-acting versus short acting
- Capsules
- Long duration drenches
- **NZ work shows sensible use of effective drench is key**



Trace Elements

- Usually not a problem, easy to fix
- Se now in most drenches (watch dose in vaccines)
- Test in winter (copper), spring (cobalt, selenium)
- Se test usually mimics status 90 days earlier – blood
- Energy (+protein) and worms more likely or spread joining!

5. Monitor for trace elements in winter / spring



Biosecurity



- Lice , Footrot
 - OJD, liver fluke(?), Drench resistance (?)
 - Brucellosis
 - Look at what you have and control/eliminate them
 - Look at what you don't have – avoid them
- 6. Keeping out diseases is always cost effective!**



Bacterial Enteritis

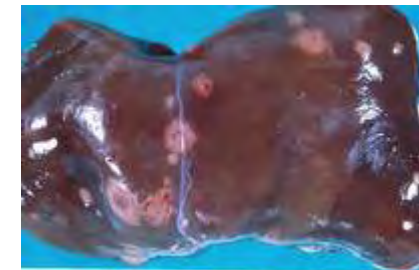
- Cold wet conditions OR hot dry
- Stress conditions, usually multiple, including mostly at least worm challenge
- Early treatment difficult
- Sulphadimidine very effective – need to give more room.





Campylobacter

- Campylobacter most common cause abortion
- Usually 3-5 months, most susceptible at 100 days
- Good survival in cool moist conditions
- Inhabitants GIT, some carriers/shedders
- Increased risk with mob stocking, hand feeding
- Vaccination?





Ectoparasites

Flies

- Timing of crutching
- Be aware of conditions – warm, moist
- Early treatment most effective

Lice

- Mustering, treating, monitoring!





Key points

1. Almost all health problems associated with management
2. If good season, diseases the problem!
3. Monitor young sheep for worms
4. Think when drenching what the effect is
5. Monitor for trace elements in winter / spring
6. Keeping out diseases is always cost effective!
7. Prevention is better than cure





Sign posts

- Making More From Sheep
 - Module 11 Healthy and contented sheep
- Wormboss
- Liceboss
- Flyboss
- MLA and I & I websites
- Your network of advisers





Questions?

ANGER MANAGEMENT

