

AN INITIATIVE OF

Making More From Sheep



Making Sheep Easier to Manage

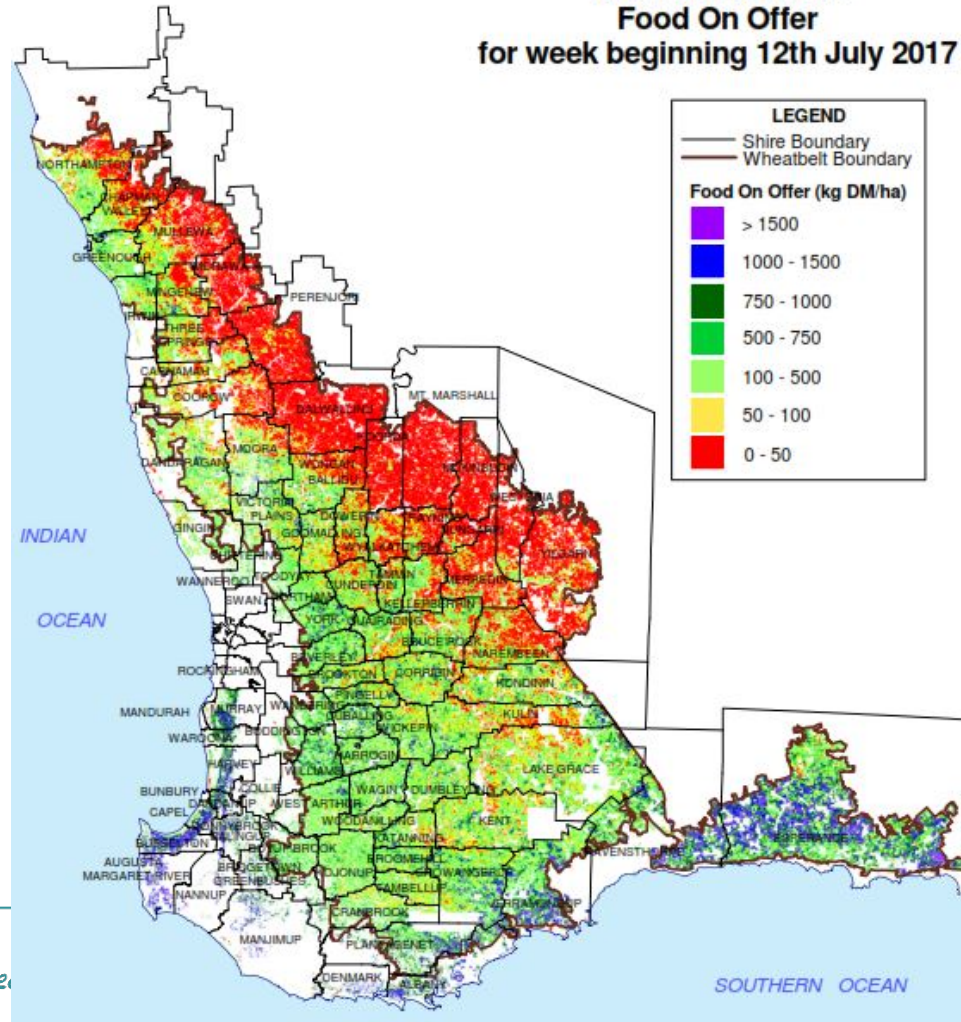
Andrew Ritchie



EVENT SUPPORTERS:



Western Australia Food On Offer for week beginning 12th July 2017



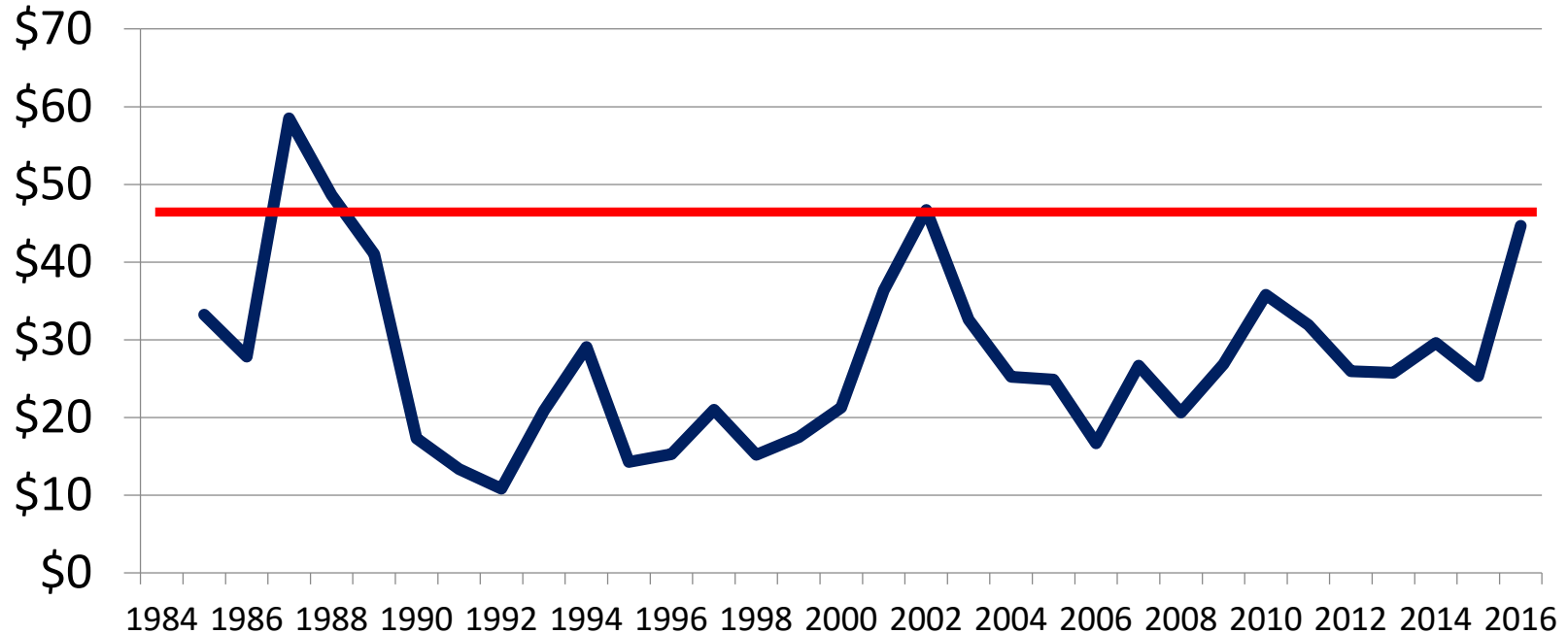


Today's Points

Sheep and Wool are pretty good now
Grab the low hanging fruit,
Then look Higher up the tree...



Gross Margin/dse (adjusted for cpi)



Low Hanging Fruit

1. Planning
2. Condition Score 3 makes an easy “recipe”
– LTEM
3. Animal Health (Flies/Worms)

Low Hanging Fruit

4. Weaner Management
5. Infrastructure and Innovation
6. Benchmarking

Planning

- The most expensive input is you!
- “Work expands so as to fill the time available for its completion.”

CN Parkinson 1955

- If you wait until the last minute, it only takes a minute to do.

Planning

- The sheep enterprise lends itself to calendar based planning
 - Organise work to fit the plan
 - Check logistics in place
 - Ensure all involved understand the what and the why
 - Perform tasks on time

Condition scoring: A recipe for success

- Sheep maintained at CS = 3+:
 - Cut more wool,
 - Have more lambs,
 - Easier to maintain,
 - Less risky,
 - Have less worm issues.

- Enrol in a Lifetime Ewe Management

Grow Feed

- Increased fertiliser spend means more feed and less hand feeding
- Green feed is by far the cheapest and highest quality source of feed
- When \$ are high be active not passive..

Animal Health

1. CS3 reduces WEC
2. Long acting products make life easy
3. Measure WEC instead of “drench anyway”

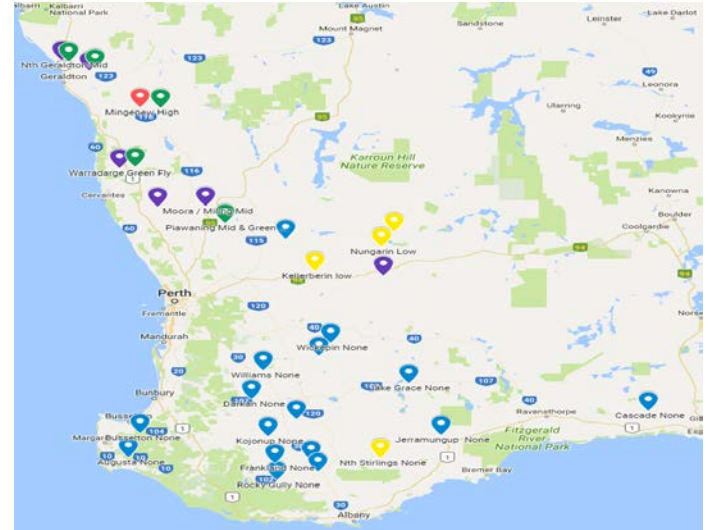


Animal Health

1. Predict Flies using BOM
2. Choice of chemical
 - Dicyclanil vs Cyromazine
3. Time of shearing?

Predict Flies

1. Temps over 15 Degrees
2. Recent Rain
3. Wind speeds below 9kmh





Weaner Management

Environment

1. Live weight @ Weaning
2. Growth Rate post weaning
3. Management

Genetics
Fat

$$= G \times E$$

Weaner Management

- They need protein to grow (Lupins)
- They run out of Vitamin E
- They have low fat reserves
- They need good water

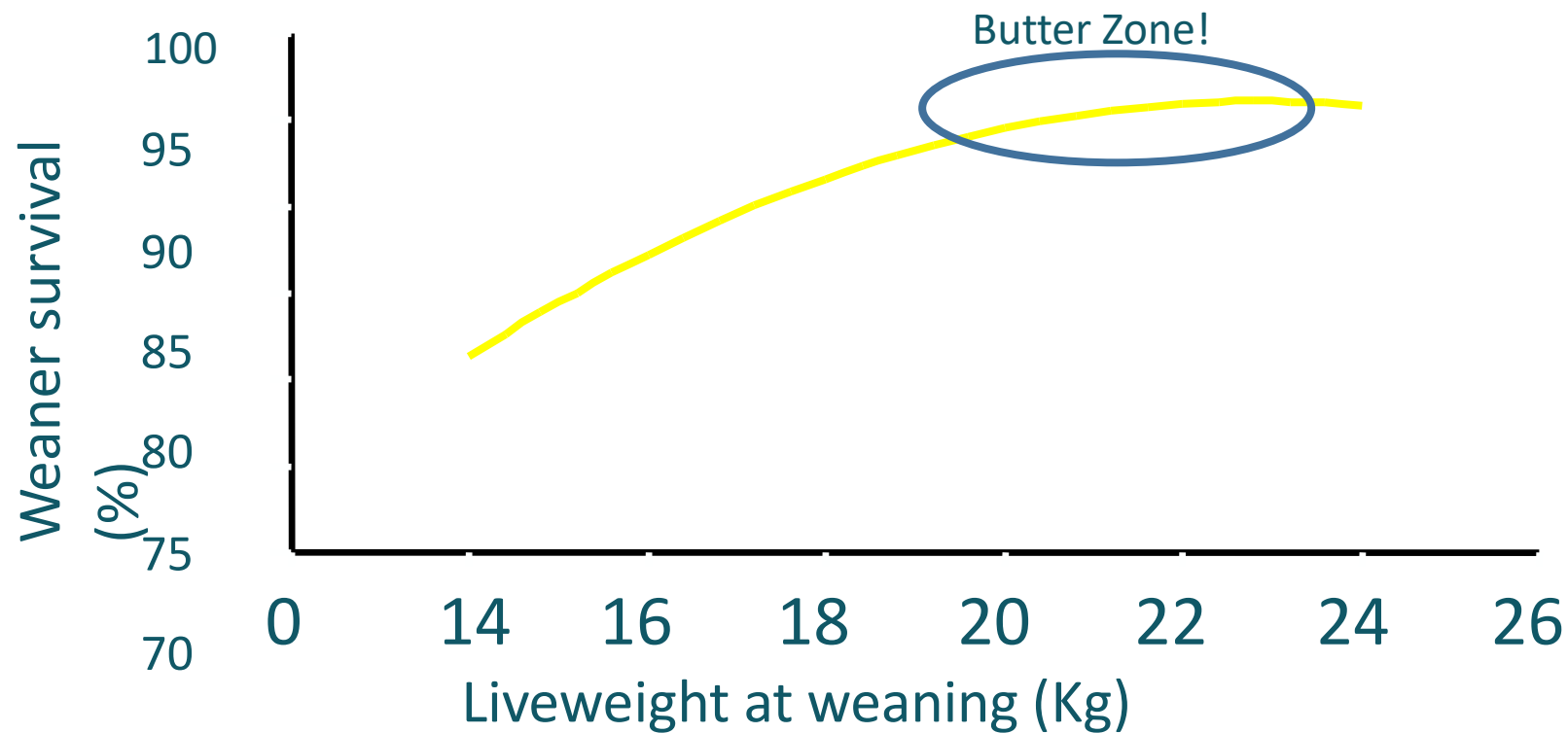


Target Growth Rates

- Growth Rates = Survival!
- 2kg/month for weaners < 20kg
- 1 kg/month for weaners 20-30kg



Liveweight





Infrastructure (tax planning...)

- Use the good times to invest in the business
 - Laneways
 - No laneways = madness...
 - Yards
 - Sheds
 - Handling Gear



Infrastructure





Handling Equipment, Shelter for the team

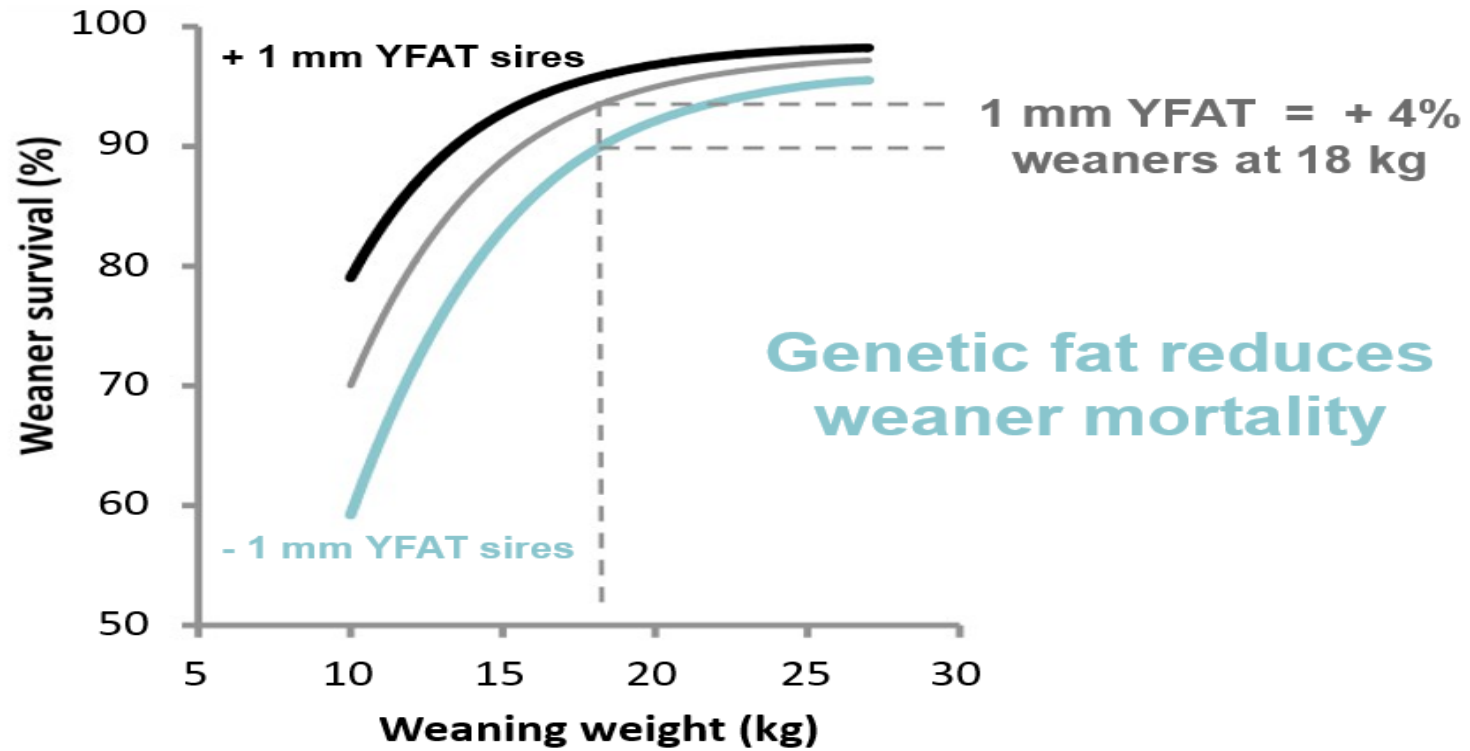


Further up the tree

- Genetics offers longer term LUE
 - ASBVs breed WEC resistance
 - Weaners and YFAT
 - Breech wrinkle & Fly strike



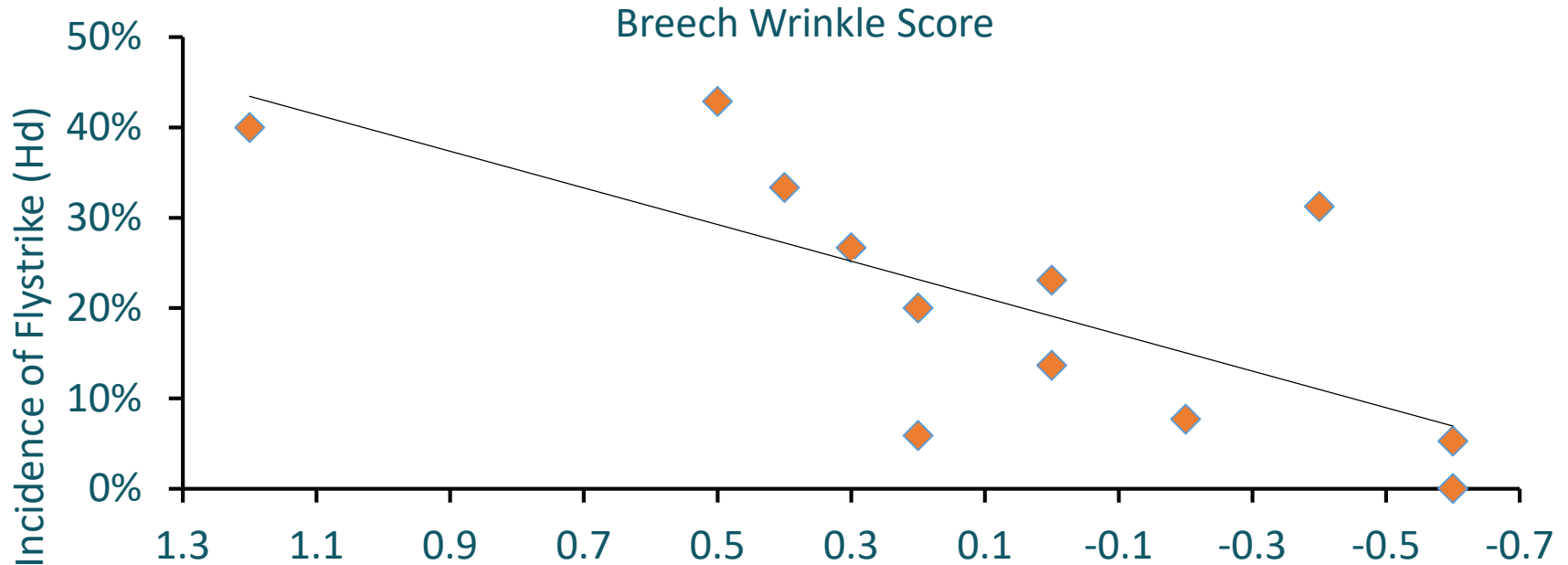
Weaner Management





Plain Body Sheep

↓ Breech Wrinkle and ↓ Flystrike



Innovation

How can we get our hands off the sheep and get more done?



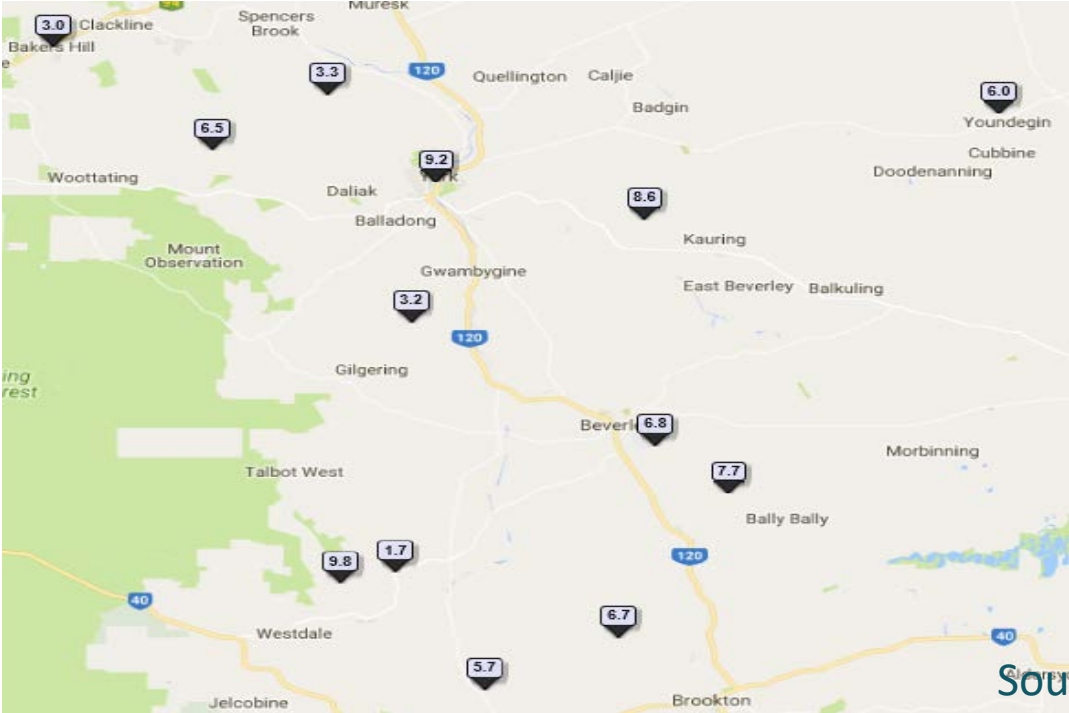
Innovation

- How can we get our hands off the sheep and get more done?



Benchmarking

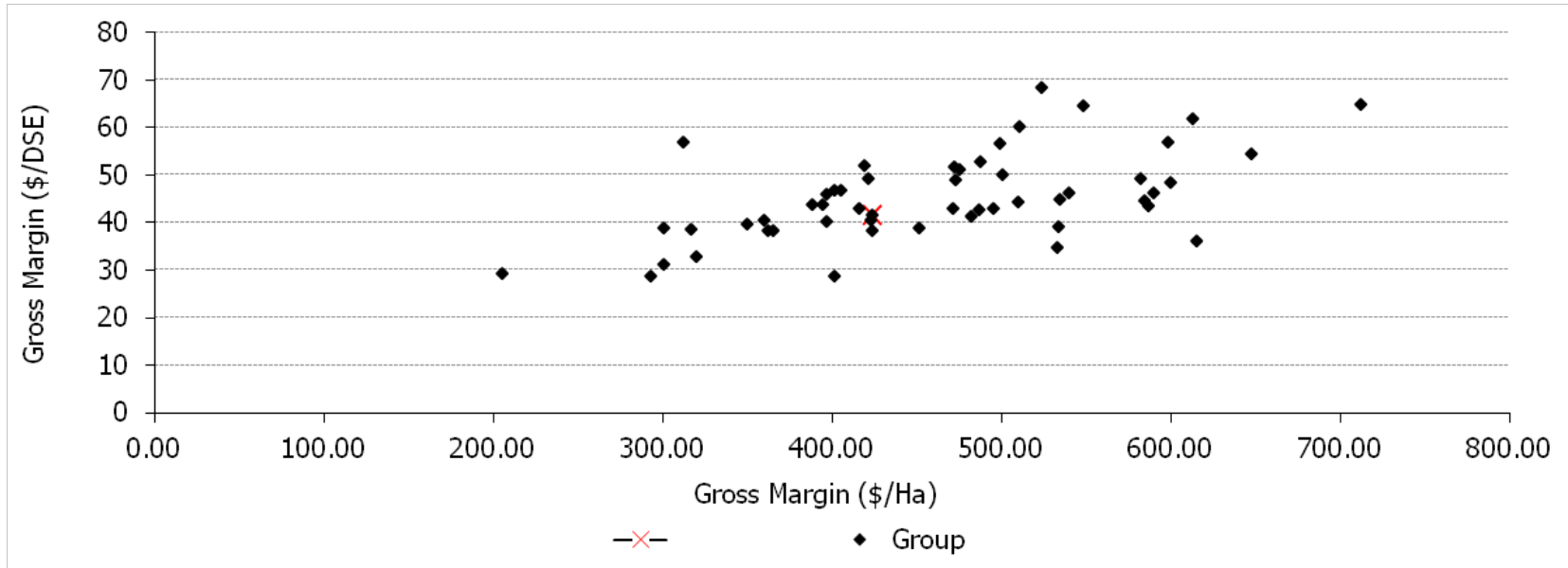
Stocking Rate dse/ha



Source: The SheepsBack



Output per DSE



Conclusions

- Sheep enterprise at record
- Low Hanging Fruit is ripe and plentiful
- Find where your business can improve
- Invest in a ladder...