



The new ewe

Mark Ferguson

EVENT
PARTNERS:



EVENT
SUPPORTERS:



STATE
PRIMARY
INDUSTRY
AGENCIES



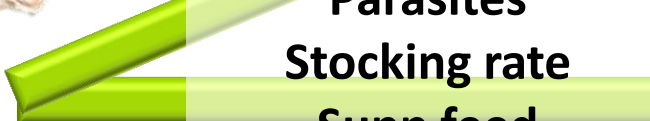
Terminals

**Fast growth, good yield
& good eating experience**



Maternals

**Reproduction
Growth
Wool
Parasites
Stocking rate
Supp feed
Labour
Welfare
Yield
Eating quality**



Making More From Sheep

The ewe of the future could have:

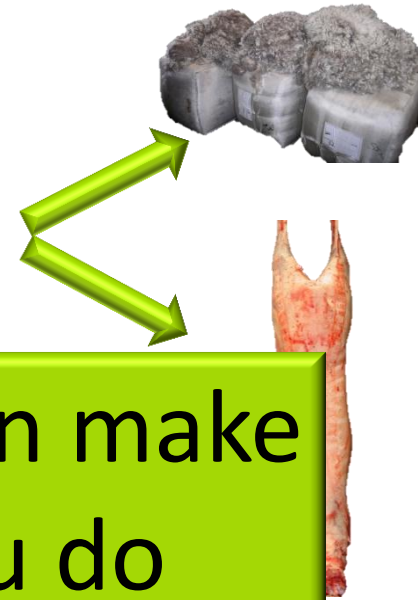
- more wool
- finer wool
- more stylish wool
- better wool strength
- better wool length
- lower CV
- higher washing yield
- better structure
- less horns
- faster growth
- better muscling
- more lambs
- less wrinkle
- barer breeches
- less worms
- less dags
- better resilience
- less flystrike



Making More From Sheep

But what should it have?

- That depends on:
 - Your production system



These are decisions only you can make
– and it is important that you do

- Your crystal ball



Making More From Sheep



Wool and reproduction

the valuable bi-product

	Ewe fleece value = \$25	
Meat Price \$/kg	Extra lambs required to break even	
\$3	>50	
\$4	>50	
\$5	37	



Making More From Sheep



- ↑ operator comfort
- ↑ operator safety
- ↑ Consumer perception
- ↑ efficiency of labour use
- ↑ efficiency of production
- ↑ dollars & people happiness



Making More From Sheep

Can we improve comfort, safety, perception, labour use, production and profitability of sheep?



Making More From Sheep

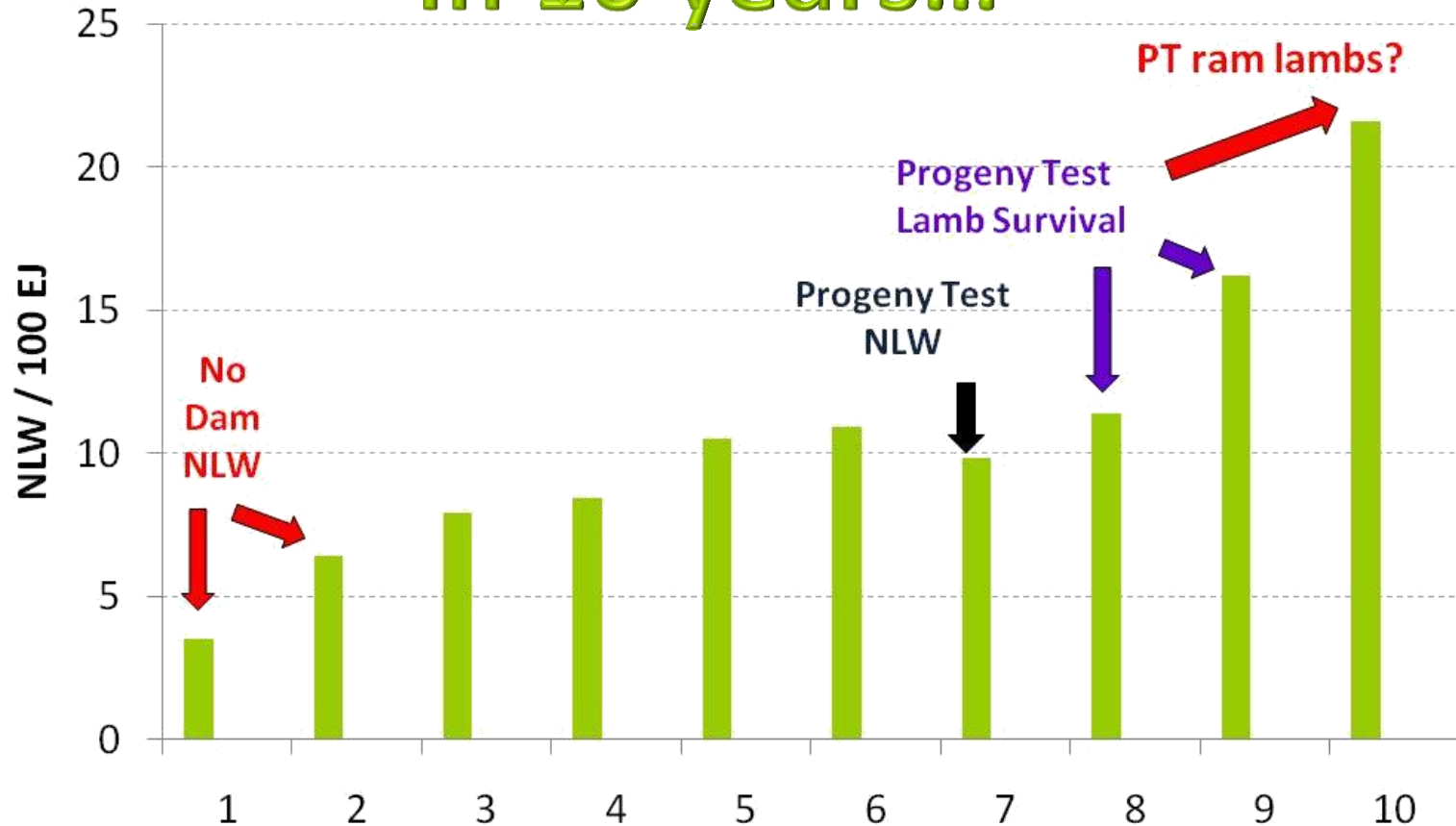
Breeding for lambs

- ASBVs for Number of lambs weaned (NLW)
- Huge range in sires (over 30 lambs per 100 ewes)
- Plus get other things going in your favour
- Growth, muscle and fat
- Wrinkle, face cover etc



Making More From Sheep

Good gains in NLW are possible In 10 years...

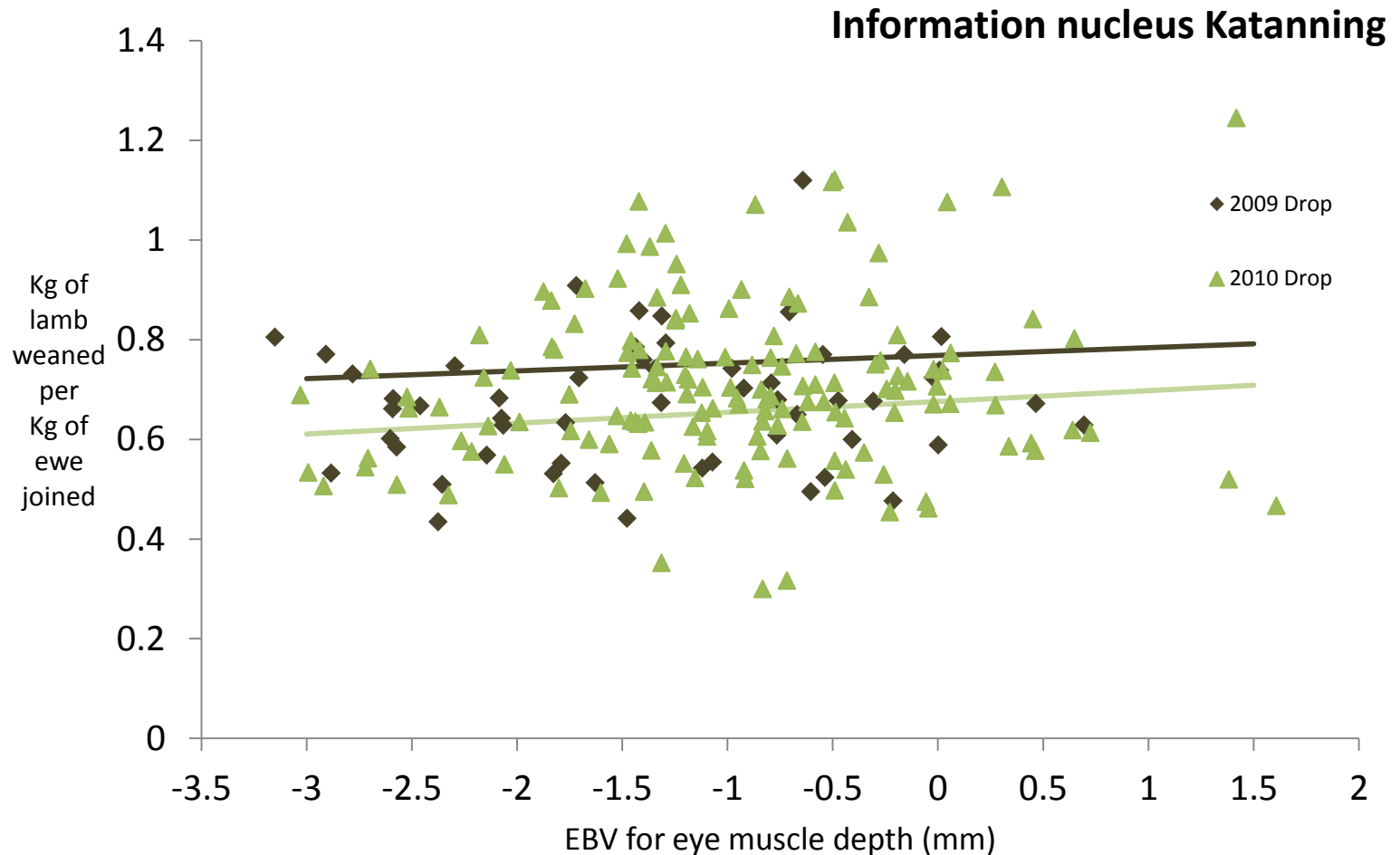


Brien et al. 2011



Making More From Sheep

Ratio of output to input



Yearling weight (YWT)



YWT



An extra 1kg here

2 more lambs here /100 ewes

-5.1

2.5

YWT (kg)

10.3



Making More From Sheep

Post-weaning weight (PWT)



PWT



An extra 1kg here



Mated as lambs

8 more lambs here../100ewes



...& 10 less days here

-4.5

1.1

PWT (kg)

6.6

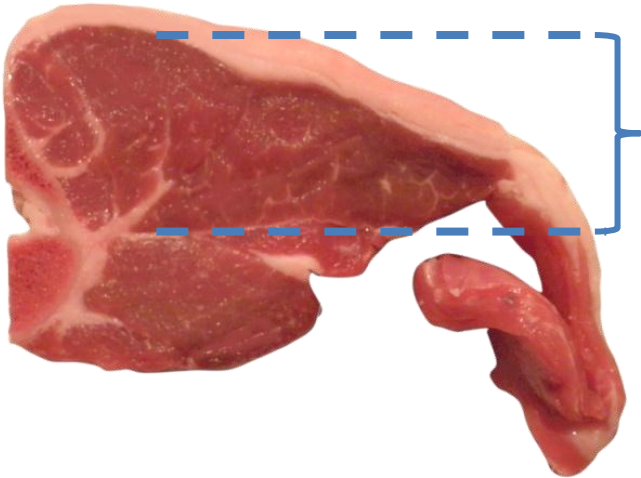


Making More From Sheep

Yearling eye muscle depth (YEMD)



YEMD



An extra 1mm here



Means 6 more lambs here

-1.4

0.4

YEMD (mm)

2.2

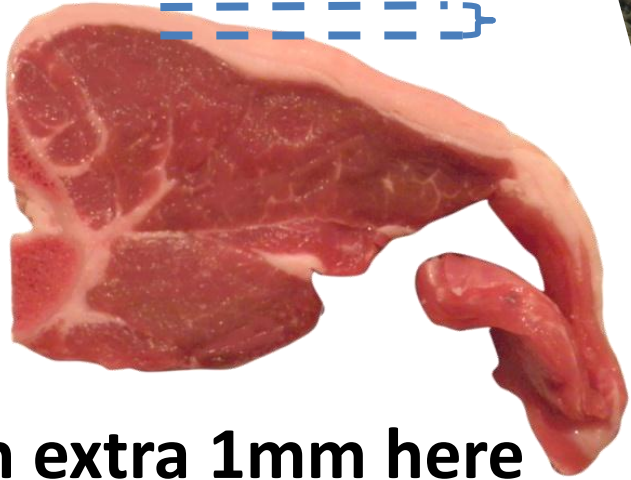


Making More From Sheep

Yearling fat depth (YFAT)



YFAT



An extra 1mm here



0 more lambs here



OR

25 more lambs here



-1.3

0.1 YFAT (mm)

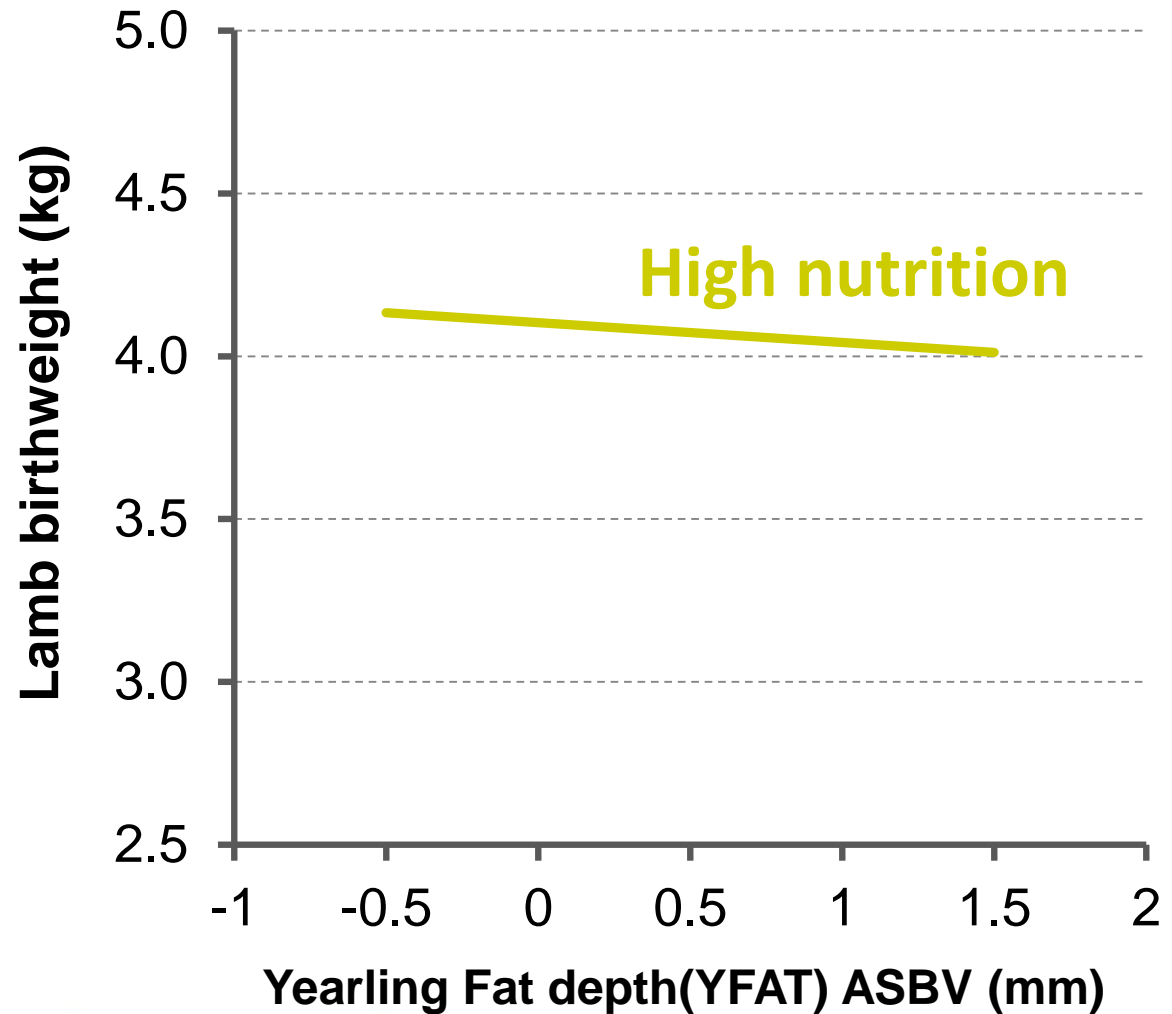
1.3



Making More From Sheep

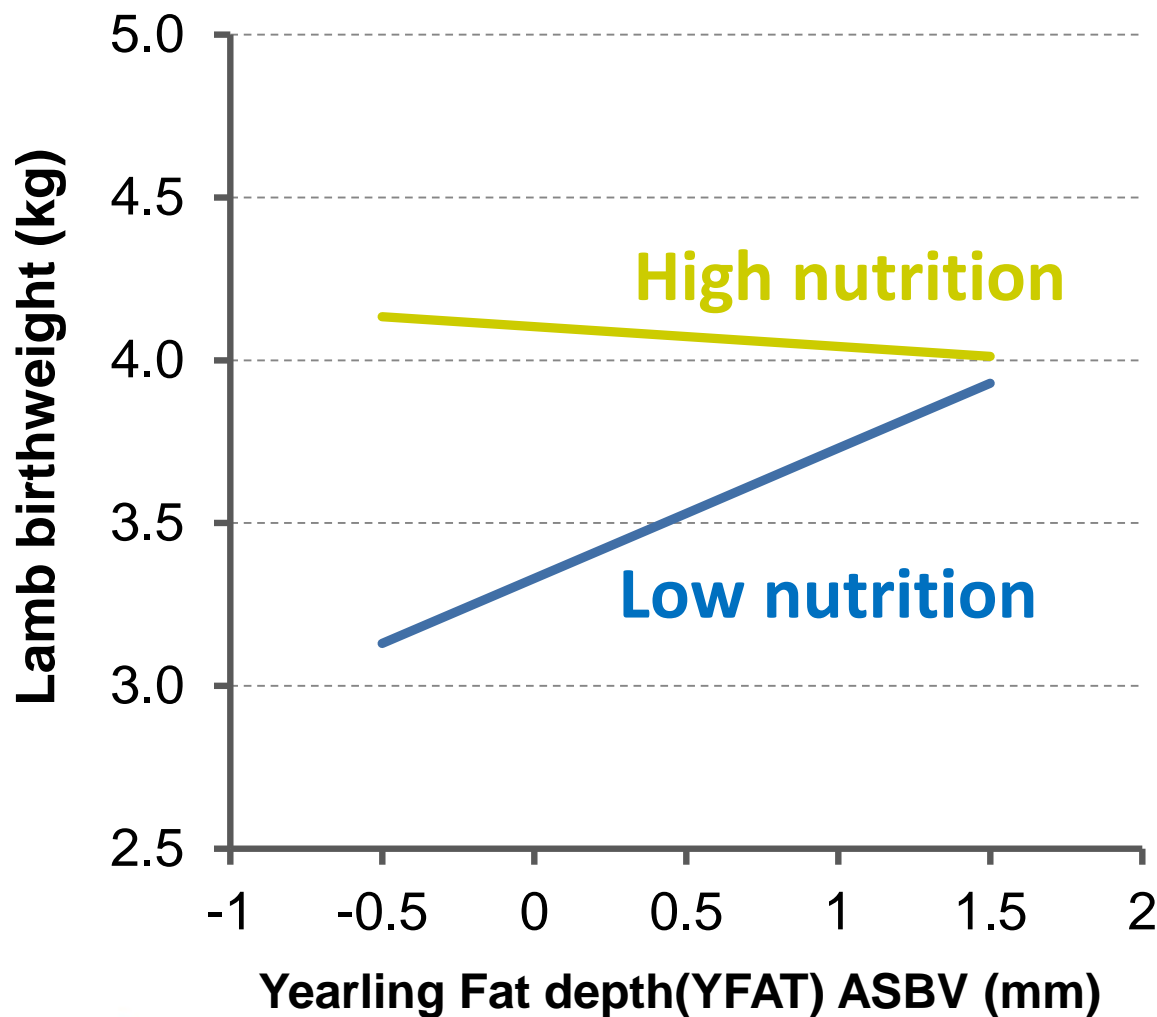


Reproduction & fat



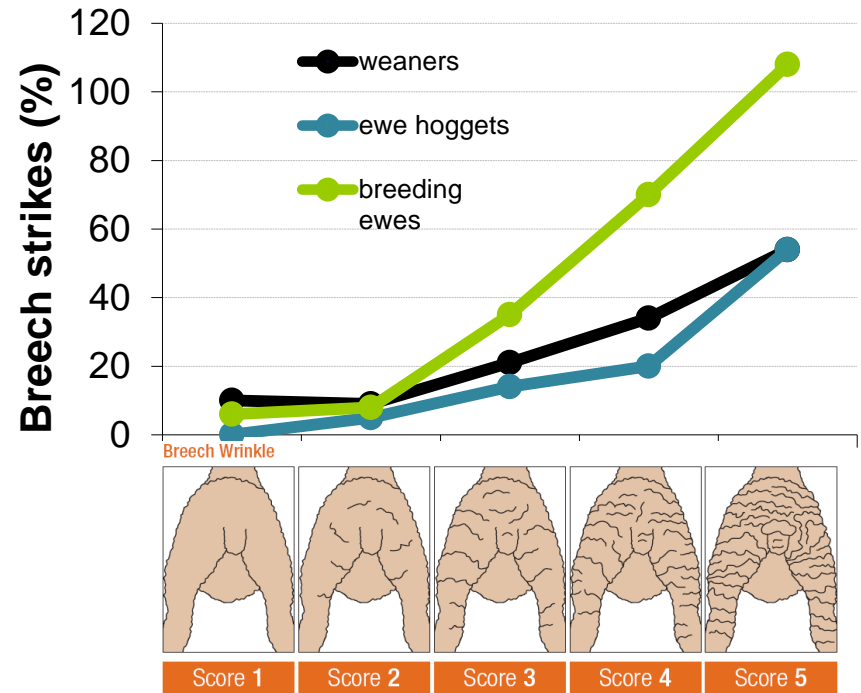
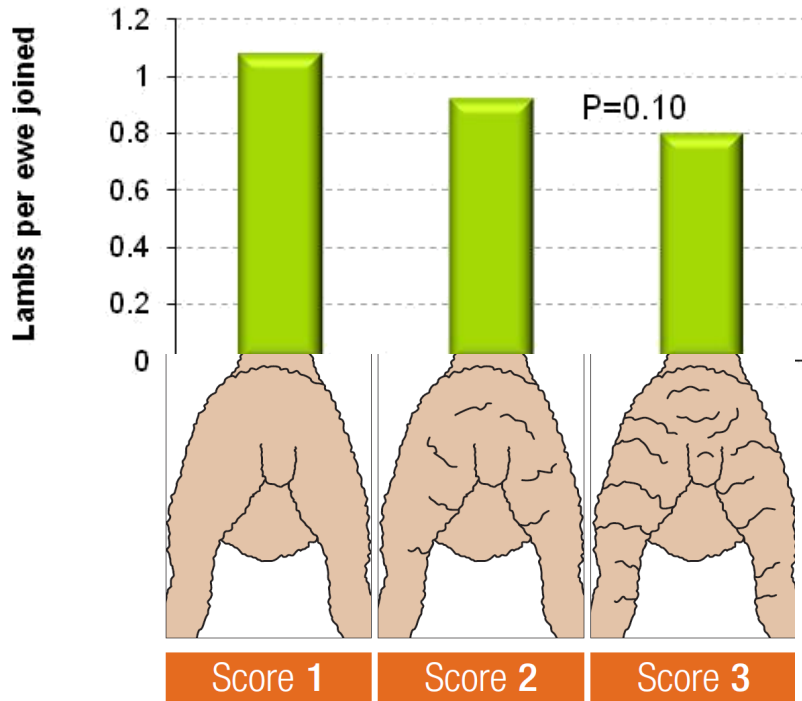


Reproduction & fat



Making More From Sheep

Less wrinkle, more lambs, less flies

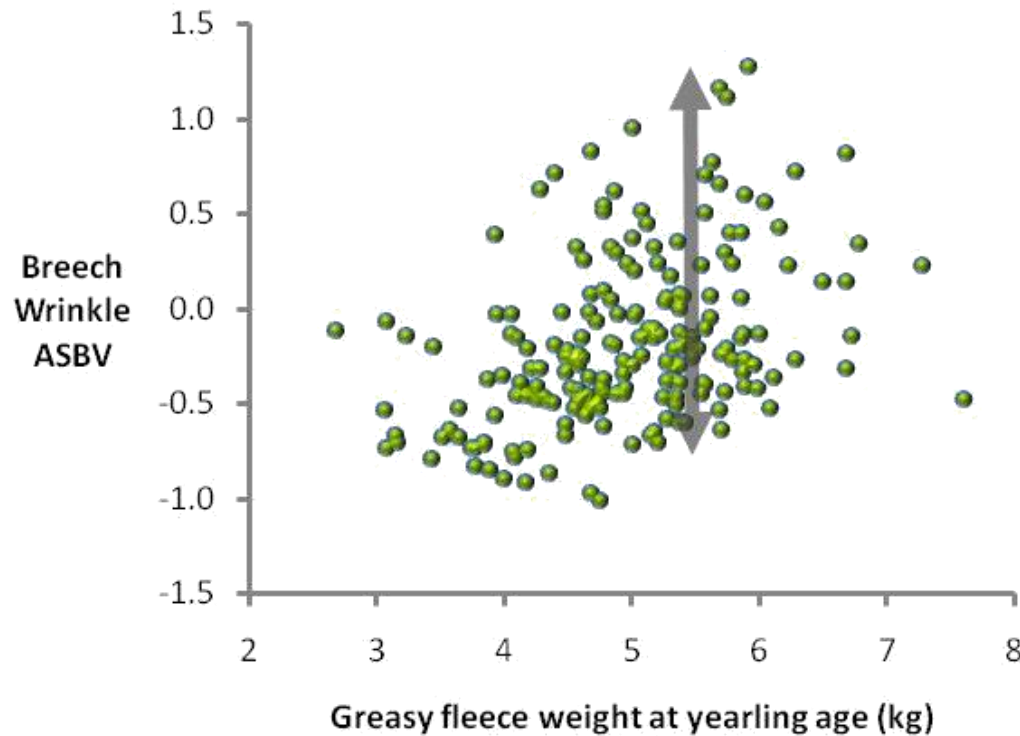


Johan Greeff
unpublished



Making More From Sheep

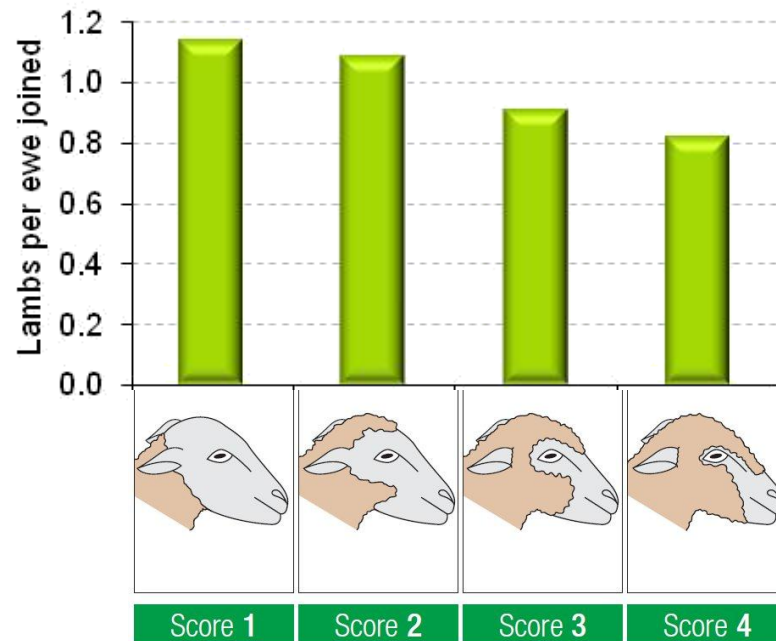
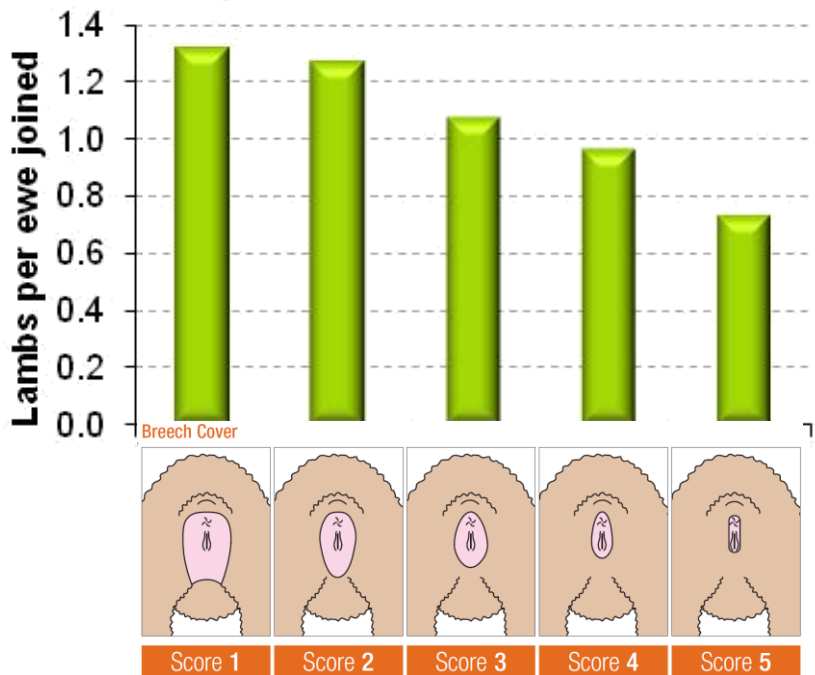
You don't have to lose wool



Making More From Sheep



Clean points - more lambs



Johan Greeff
unpublished



Making More From Sheep



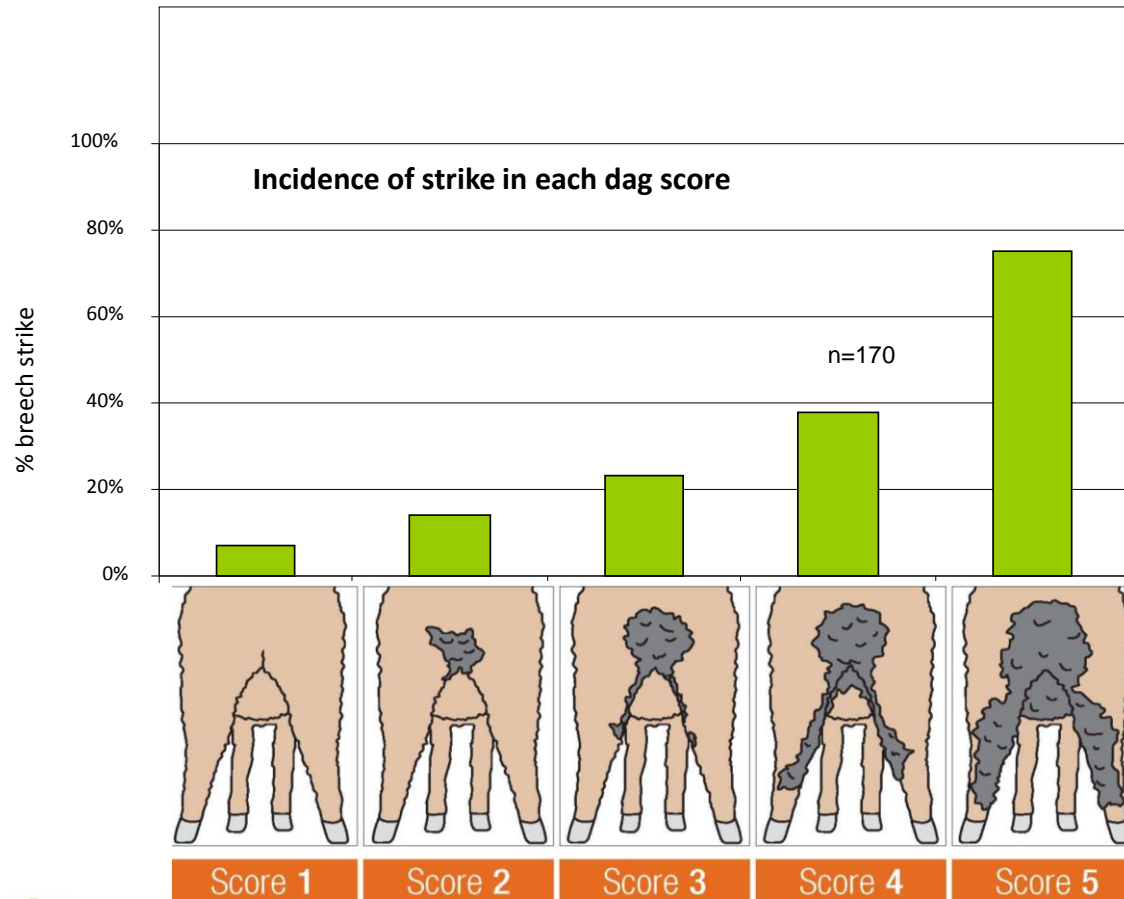
Healthy \$heep

- Large genetic variation in sheep resistance to internal parasites
- Use WEC ASBVs as much as possible to breed more resistant sheep
- Reduce but not remove reliance on chemicals



Making More From Sheep

Less Dags, less flies, less work





The romance of horns



- No doubt they look good
- BUT, Horns = pain
- For the animal and their carer
- Transport issues
- De-horning not a good look
- Time to move on



Making More From Sheep

THE BLUE PRINT

- ✦ Fertile at 7-8 months
- ✦ Weaning heavy twins
- ✦ Well muscled
- ✦ Resilient to tough times
- ✦ Wrinkle and dag free
- ✦ Worm free
- ✦ Polled
- ✦ Bare head and legs
- ✦ Quality wool



The future is bright: **Future Park 099337**

Poll Merino, 30kg at weaning, 70kg at 10 months
and was 50 days pregnant with twins!



WWT: +5.5 kg

PWT: +7.1kg

PEMD: +1.6mm

PFAT: +0.5mm

Get on board...the genetics express



Making More From Sheep